

Globally Consistent Creditor Protection, Reallocation, and Productivity*

Bo Bian[†]

Job Market Paper

This Draft: November, 2018

Most Recent Draft: [click here](#)

Abstract

This paper documents that resource reallocation across firms is an important mechanism through which creditor rights affect real outcomes. I exploit the staggered adoption of an international convention that provides globally consistent strong creditor protection for aircraft finance. I find that country-level productivity in the aviation sector, proxied by average monthly flying hours per aircraft, increases by 12% following the adoption of the Convention. Across-firm reallocation accounts for most of the productivity increase. Productive firms borrow more, expand, and adopt new technology at the expense of unproductive ones. Such reallocation is facilitated by (i) easier and quicker asset redeployment; and (ii) the influx of foreign financiers offering innovative financial products to improve credit allocative efficiency. I further document an increase in competition and an improvement in the breadth and the quality of products available to consumers.

JEL Classification: D22, D24, G32, G33, K12, K33, L11

Keywords: Creditor Rights, Allocative Efficiency, Reallocation, Productivity and Growth, Financial Frictions

*I wish to thank the AQR Asset Management Institute and the Institute of Innovation and Entrepreneurship at London Business School for their financial support. I am extremely grateful for the guidance of my supervisor, Vikrant Vig. I would like to thank Daron Acemoglu, Simcha Barkai, Lorenzo Bretscher, Svetlana Bryzgalova, Nuno Clara, Francesca Cornelli, Dimas Fazio, Julian Franks, Denis Gromb, Christopher Hennessy, Nicholas Hirschey, Thilo Kind, Stefan Lewellen, Jean-Marie Meier, Arkodipta Sarkar, Stephen Schaefer, Henri Servaes, Rui Silva, Jan Starmans, Oren Sussman, Jeffrey Wool, Ting Xu, Luofu Ye and seminar participants at London Business School, the HEC PhD workshop, the Oxford Finance Job Market workshop, the Trans-Atlantic Doctoral Conference, and the Wheeler Institute PhD Conference for their helpful comments. Thanks also to Elizaveta Novoselova, Gary Lifford and Zheng Lei for their help with the data. The usual disclaimer on errors applies.

[†]London Business School, Department of Finance, bbian@london.edu.

1 Introduction

Since the pioneering work by [La Porta, Lopez-De-Silanes, Shleifer, and Vishny \(1997, 1998\)](#), [Levine \(1998, 1999\)](#) and [Levine, Loayza, and Beck \(2000\)](#), numerous studies have documented the positive effects of creditor protection on credit market development and economic growth. The underlying theoretical argument is that strengthening creditor protection relaxes financial constraints, which allows greater investment in technology and higher firm-level efficiency ([Midrigan and Xu \(2014\)](#) and [Cole, Greenwood, and Sanchez \(2016\)](#)).¹ A burgeoning literature provides firm-level micro evidence supporting the above argument.²

This representative firm’s view, however, ignores heterogeneity across firms and the potential distributive effect due to changes in legal institutions ([Lilienfeld-Toal, Mookherjee, and Visaria \(2012\)](#)). Economic reforms often create winners and losers, generating growth through the downsizing of inefficient producers and the disproportionate growth of efficient producers.³ It is natural to expect that creditor rights reforms also induce such across-firm resource reallocation. Theoretically, strengthening creditor protection allows quick repossession of assets upon default and facilitates asset redeployment to more productive asset users ([Harris and Raviv \(1990\)](#), [Jensen \(1993\)](#) and [Hart and Moore \(1995\)](#)).⁴ Do stronger creditor rights yield productivity improvements by reshuffling resources across firms? Do industry dynamics, such as exit, contribute to this process? What is the relative importance of this across-firm reallocation channel in explaining the aggregate productivity growth? This paper attempts to empirically investigate these questions.

Tracing the micro channels underlying economic growth is policy-relevant because the welfare costs of economic reforms depend largely on the specific channel that generates aggregate growth. If growth is exclusively achieved by individual firm-level investment and expansion, then strengthening creditor protection is likely to be welfare-enhancing. Alternatively, if aggregate gains come from the reallocation of resources, which involves the scaling down or exit of inefficient firms, then a reform can be controversial due to reallocations and displacements of capital and labor.⁵ So far, scant attention has been paid to understanding and quantifying the different micro mechanisms underlying the argument that law promotes growth.

¹For the disciplining role of debt finance, see [Gale and Hellwig \(1985\)](#), [Bolton and Scharfstein \(1990, 1996\)](#), [Aghion and Bolton \(1992\)](#), and [Dewatripont and Tirole \(1994\)](#), among others.

²See [Haselmann, Pistor, and Vig \(2010\)](#), [Benmelech and Bergman \(2011\)](#), [Campello and Larrain \(2016\)](#), [Ponticelli and Alencar \(2016\)](#) and [Calomiris, Larrain, Liberti, and Sturgess \(2017\)](#) among others. There are also a few exceptions that discuss the potential adverse consequences of strong creditor rights, see [Acharya, Amihud, and Litov \(2011\)](#), [Vig \(2013\)](#), and [Adler, Capkun, and Weiss \(2013\)](#).

³See deregulation in [Olley and Pakes \(1996\)](#) and trade liberalization in [Pavcnik \(2002\)](#).

⁴These theory papers discuss the benefits of efficient bankruptcy by triggering a change in control of the firm and the exit from unprofitable projects. The formal legal protection of creditors’ rights may also encourage the entry of new and efficient lenders, leading to better credit allocation, see [Sengupta \(2007\)](#).

⁵Local governments are usually concerned about the initial cost of labor displacement and firm bankruptcies, which can deter the implementation of pro-market policies.

Researchers face several empirical challenges in identifying the micro mechanisms, especially the across-firm reallocation mechanism. In an ideal setting, to detect reallocation, we first need high-quality micro data to track asset users over time. Standard corporate data sources do not usually contain information at such a granular level. Second, we need to measure the economic performance of assets consistently across firms. This allows us to determine firms' efficiency levels and gauge whether the reallocation produces aggregate efficiency gains. The key is to have assets of similar quality as input, which produce homogeneous output. This ensures that the economic activity generated by the assets is comparable and can be consistently measured, even if assets are redeployed to different users. Most assets, however, differ in their quality and usage to a certain degree. Third, because reallocation happens across firms, measuring it requires a census style dataset that captures most of the activities within the economy or sectors where reallocation occurs. Lastly, beyond the severe data limitations, shocks to creditor protection are required to constitute a reasonable identification strategy.

The airline industry provides a rare laboratory to address the above challenges. First, aircraft are easily identifiable and traceable, which ensures granular and high-quality *aircraft-level* data on asset user history and capacity utilization. In particular, being movable and redeployable within the aviation sector, aircraft generate output that is relatively homogeneous and can be proxied by flying hours.⁶ These features allow consistent and accurate measurement of redeployment and economic performance of assets. Moreover, the stringent registration requirement facilitates tracking of economic activities, such as expansion or contraction of the fleet, for every single airline. Lastly, over the past fifteen years, this industry has undergone a significant reform regarding creditor protection. The mobility of aircraft calls for an internationally consistent contracting framework for aircraft finance. In this context, *the Cape Town Convention on International Interests in Mobile Equipment* [the "Convention"] and *the Protocol to the Convention on International Interests in Mobile Equipment on Matters Specific to Aircraft Equipment* [the "Protocol"] were introduced in the early 2000s. The Convention provides a unified scheme of strong creditor protection by enabling international registration of creditor rights and rapid repossession within 60 days upon default.

Countries adopted the Convention at different times. As of late 2018, there are 77 Contracting States, including most of the large economies. The Convention applies whenever the debtor belongs to a Contracting State. The *staggered* nature of the reform and the richness of the aviation data allow me to investigate how stronger creditor protection affects aggregate

⁶Gavazza (2011b) argues that we can infer productivity from capacity utilization. Gavazza (2011a,b) and Benmelech and Bergman (2011) similarly exploit information on the flying hours of aircraft. Aircraft utilization per day is also considered a key performance indicator in the airline industry. Moreover, data seems to suggest that capacity utilization, productivity and profitability are closely related. For instance, at the aggregate level, aircraft are parked and inactive more frequently in recessions than in booms. At the individual firm level, capacity utilization is substantially lower before entering distress or bankruptcy. See Appendix B for more evidence.

productivity in the aviation sector through across-firm reallocation of assets and credit.⁷ Using the differences-in-differences methodology, I compare changes in the *aggregate productivity* and the *responsiveness of resource allocation to firms' efficiency levels* across treated and untreated countries.

Using the average aircraft utilization rate in a country as a measure of aggregate productivity, I first find that stronger creditor protection leads to a remarkable increase in aggregate productivity. Following the adoption of the Convention, the average monthly flying hours per aircraft in a ratifying country increase by 11.7%. The significance and magnitude of this result is robust to controlling for a wide range of industry regulatory, macroeconomic, institutional, and political factors.

Second, I unbundle the gain in aggregate productivity. Aggregate productivity can be higher either because firms individually become more productive or because the allocation of resources across firms becomes more efficient. The analysis suggests that across-firm changes dominate in my setting. I find that after the reform, more efficient asset users, i.e., airlines with higher aircraft utilization rates, expand and adopt new technology at the expense of less efficient asset users. The reallocation effect is significant and economically large: a one standard deviation increase in pre-reform productivity translates into a 13% increase in fleet size, and a reduction in average fleet age of close to one year. Post-reform, more than a quarter of firms are subject to contraction. Among them, the least productive ones are likely to downsize substantially and exit the market. Based on point estimates, the growth in aggregate productivity is mostly driven by shifts in relative firm size among surviving firms ($\sim 6\%$) and inefficient firms' exits ($\sim 4\%$).

Why does the reform lead to across-firm reallocation? I find evidence consistent with two explanations, which relate to easier physical asset reallocation ex-post and more efficient credit allocation ex-ante. First, with swift repossession, capital that was previously stuck with distressed or bankrupted airlines should now be quickly redeployed to healthier and more efficient airlines. Consistent with this, asset redeployment increases by 15% to 20% after the reform. The time it takes to redeploy aircraft from failing airlines to new users also shortens from ten months before the reform to four months after the reform. Second, also central in the reallocation process is the active engagement of foreign financiers. Following the reform, I find that the share of deals financed by foreign lenders increases by 10%. These expanding foreign financiers also introduce innovative financing instruments, such as the Enhanced Equipment Trust Certificate

⁷Economic growth can be achieved through either factor accumulation or higher productivity. I focus on productivity, since reallocation affects total output through its impact on aggregate productivity rather than factor accumulation, when firms differ in their efficiency levels. Nevertheless, I also study outcome variables such as capital stock, investment, vintage of capital, and total output. I find large and positive effects on these variables.

(EETC), to the treated markets.⁸ As a result, I further find that credit allocation in treated countries becomes more responsive to firm-level productivity, suggesting higher credit allocative efficiency.

Lastly, I also study the reform's impact on market structure and consumers. I find that the Convention triggers consolidation in the traditional mainline business (full service legacy carriers) and encourages the creation of new, differentiated products offered by specialized carriers (e.g., low cost, leisure airlines). Competition intensifies following the introduction of the Convention, especially in countries that had a highly concentrated airline industry. These changes also bring benefits to consumers. Following the reform, consumer choice broadens and the average quality of products, measured by air travel safety and consumer satisfaction ratings, also improves. These results suggest that stronger creditor rights can benefit consumers through more varied and better product offerings in a more competitive environment.

The identification strategy treats the timing of the Convention's ratification in a given country as exogenous. One reassuring fact is that, on average, the cumulative market-adjusted returns earned by listed airlines over the three-day period surrounding the ratification dates of respective countries reach 2%.⁹ Such stock price reactions suggest that the Convention is unlikely to be anticipated by the market. However, one may still worry that a country's choice to ratify the Convention could be correlated with other omitted variables, such as investment opportunities in the aviation industry. While I cannot completely rule out alternative explanations, I take several steps to alleviate such concerns.

First, I use a hazard model with a wide range of explanatory variables to study the entry decision.¹⁰ I find that most factors, including macroeconomic variables, legal origins and political systems do not matter significantly. More importantly, a spurious positive correlation between the entry and investment opportunities does not seem to be borne out by the data. On the one hand, I find that the pre-convention size and growth of the aviation industry do not affect the entry decision. On the other hand, I show that countries characterized by higher concentration and more severe distortion tend to benefit more from the Convention, while in the hazard model these two features impede the adoption of the Convention. This implies a negative correlation between entry into the Convention and investment opportunities, which makes finding any effects more difficult.

⁸EETCs became available to non-US airlines only when the Convention took effect. Air Canada issued its first EETC in April 2013, while Canada ratified by the end of 2012. The other examples include Latam, Turkish Airlines, Emirates, and Norwegian. In all these cases, EETC first appeared after the reform. Moody's has documented the adoption of the Convention as the critical trigger for the successful issuance of an EETC.

⁹Interestingly, a simple cross-sectional test reveals that the positive abnormal returns are enjoyed exclusively by healthier airlines.

¹⁰In light of the recently raised caution against identification strategy based on legislation, regulations, or court decisions, as in [Karpoff and Wittry \(2018\)](#), such analysis is helpful in addressing some identification concerns.

Second, I analyze the dynamic effects of the Convention and detect no obvious pretrends (Figures 2 and 3). Third, I find that the increase in aggregate productivity and the reallocation effect are both concentrated in countries with *weak* ex-ante creditor protection. Fourth, I include region \times year fixed effects to absorb any region-specific trends. The estimates are also stable after controlling for a series of group-specific time varying trends. I further ensure robustness against a wide range of control variables, including macroeconomic, legal, institutional and political factors, and in particular, contemporaneous changes in pro-market aviation policies. Another piece of evidence is that the reallocation results survive the inclusion of country \times year fixed effects, which absorb country-specific macroeconomic shocks or trends.

Related Literature. This paper contributes to several strands of the literature. It first adds to the large and still growing literature that examines how different aspects of creditor protection affect lending and real economic outcomes.¹¹ A closely related paper is [Benmelech and Bergman \(2011\)](#), which considers the impact of stronger creditor rights on the vintage of capital in the airline industry across countries. [Haselmann, Pistor, and Vig \(2010\)](#) differentiate between collateral and bankruptcy law in shaping banks' lending behavior in transition economies. [Campello and Larrain \(2016\)](#) study how the enlargement of collateral menus affects total factor productivity, labor, and profitability. By exploiting the congestion of civil courts, [Ponticelli and Alencar \(2016\)](#) examine the effect of bankruptcy enforcement on firms' access to finance and investment. This paper deviates from the existing literature in two ways. First, I examine changes in *aggregate* productivity in the aviation sector, while the above papers primarily study *firm-level* responses. Affected by both within-firm and across-firm dynamics, aggregate productivity allows me to better evaluate the *overall* impact of stronger creditor protection. Second, combining aggregate and micro-level evidence allows me to draw conclusions on the mechanisms underlying the effect of creditor rights on real economic outcomes. In contrast to prior studies, which focus on the role of within-firm investment and technology adoption of an average firm, I emphasize the role of across-firm reallocation. In a related paper, [Lilienfeld-Toal, Mookherjee, and Visaria \(2012\)](#) study the distributive impact of legal changes in creditor rights. While they compare small versus big borrowers, I study the redistribution from unproductive to productive asset users, and highlight the role of new financiers' entry.

This paper is also related to the microeconomic literature on productivity. An influential paper by [Hsieh and Klenow \(2009\)](#) argues that resource misallocation can significantly lower aggregate total factor productivity and may account for a large portion of the cross-country difference in average productivity.¹² This literature, however, has not pinned down the exact source of misallocation. This paper joins the recent empirical work that studies the role of mitigating financial frictions in improving allocation. [Wurgler \(2000\)](#) and [Fisman and Love](#)

¹¹See two recent papers: [Campello and Larrain \(2016\)](#), [Calomiris, Larrain, Liberti, and Sturgess \(2017\)](#), and the reference therein.

¹²See also [Banerjee and Duflo \(2005\)](#) and [Restuccia and Rogerson \(2008\)](#), among others.

(2004) arrive at the broad conclusion that a more developed financial market is associated with a better allocation of capital. Two closely related papers are [Larrain and Stumpner \(2017\)](#) and [Bai, Carvalho, and Phillips \(2018\)](#). The former connects capital account liberalization to aggregate total factor productivity through higher allocative efficiency while the latter studies how bank deregulation leads to labor and capital reallocation to young and productive firms. This paper similarly emphasizes the central role of reallocation, but focuses on a different source of financial friction – weak creditor protection. Another deviation is that my setting allows me to compute a quantity-based measure to assess firms’ efficiency levels instead of relying on revenue-based measures that tend to mix true efficiency levels with mark-ups ([Foster, Haltiwanger, and Syverson \(2008\)](#))).

In the end, this paper attempts to connect financial contracting to the product market and the consumers ([Varela \(2018\)](#)). By analyzing the effect of creditor protection on competition, product variety and quality, I am able to discuss the potential gains of this reform from the consumers’ perspective.¹³ Such analysis is rare due to data limitations.

The remainder of this paper is organized as follows: Section 2 describes the institutional details. Section 3 explains the construction of the dataset and provides descriptive statistics, while Section 4 introduces the empirical strategy. In Section 5, I present the main results on productivity and reallocation. Section 6 explores why such a reform induces reallocation, while Section 7 discusses implications for consumers. Section 8 addresses some remaining issues and Section 9 concludes. More details on the data and additional results are presented in the Appendix.

2 The Airline Industry and the Cape Town Convention

The aviation industry is one of the world’s most economically significant industries. Commercial aviation related business currently provides 8.4% of jobs and contributes to more than 5% of GDP in the US.¹⁴ Across the world, the industry has been growing rapidly over the past twenty years and is expected to continue doing so in the next few decades. According to the International Air Transport Association (IATA), the trade association of the world’s airlines, the annual number of air passengers will double to seven billion by 2034. In the past three years, the commercial aircraft manufacturers delivered around \$130 billion worth of new aircraft every year. The financing needs of such a fast growing industry are obviously enormous.

Despite the industry’s attractive prospects, financing an aircraft is challenging. A typical Boeing or Airbus jet costs \$70 million to \$400 million, with a median value of \$200 million.

¹³For studies on market concentration and quality provision, see [Matsa \(2011\)](#) and [Olivares and Cachon \(2009\)](#).

¹⁴See estimates from FAA (https://www.faa.gov/air_traffic/by_the_numbers/).

The high cost of aircraft suggests the need for external financing. At the same time, airlines are susceptible to distress and bankruptcy, which means financing could be very risky for lenders. Air Berlin, Monarch Airlines and Alitalia are all recent examples of airline collapse.¹⁵ As aircraft are also highly tractable and redeployable, asset based financing seems to be a solution to financing challenges.

However, the mobility of aircraft poses a problem: it impedes efficient repossession upon default. Aircraft can easily move across jurisdictions, making it difficult to clearly define the rights of creditors and debtors. To make things worse, unlike most tangible assets, the value of an aircraft can depreciate rapidly if it is left unused or not properly maintained while waiting for recovery.¹⁶ These factors call for a globally integrated framework of strong creditor protection, in order to allow easier external financing for aircraft. The Cape Town Convention and the Aircraft Protocol were designed to address these needs. The Convention was initially inspired by Section 1110 of the US Bankruptcy Code. This section contains a brief introduction of Section 1110 and then discusses the main features of the Convention.

2.1 US Section 1110 and Aircraft Finance in the US

US Section 1110 (11 U.S.C. §1110) was developed based on protections available to financiers in the nineteenth-century rail industry (Ripple (2002)). Section 1110 enables a secured party with an interest in an aircraft to take possession of the equipment within 60 days after a bankruptcy filing, unless all defaults are cured by the airline. More specifically, it provides relief from the automatic stay following termination of the waiting period. Therefore, the lender's right to take possession of the collateral is not hindered by the automatic stay provisions of the US Bankruptcy Code. Section 1110 is the major difference between airline reorganizations and other Chapter 11 reorganizations. Since its introduction, US Section 1110 has greatly reshaped the US aircraft finance market. Asset-backed securities, such as ETCs and EETCs, are widely used by US carriers to obtain financing from capital markets at favorable prices.

2.2 The Cape Town Convention as a Source of Variation in Creditor Rights

The Cape Town Convention on International Interests in Mobile Equipment was inspired by US Section 1110 and its pivotal role in the expansion of financing resources for US carriers. It is designed to provide an internationally consistent contracting framework for the financing of high

¹⁵Air Berlin filed for insolvency on 15 August 2017 and ceased operations on 27 October 2017. Monarch entered administration and ceased operations on 2 October 2017. Alitalia historically received several bailouts and went into administration again on 2 May 2017. Over the past four decades, there are more than 100 bankruptcies alone in the US airline industry, see <http://airlines.org/dataset/u-s-bankruptcies-and-services-cessations>.

¹⁶According to Gray, MacIntyre, and Wool (2015), the inspection tasks required to return an aircraft to service can cost more than \$2 million if the aircraft is left unused for one month.

value movable assets. Three protocols to the Convention are applicable to three types of movable equipment: Aircraft Equipment (aircraft and aircraft engines), Railway Rolling Stock and Space Assets. As of now, only the Aircraft Equipment Protocol has taken effect. The Convention was signed in 2001 as a result of a diplomatic conference held in Cape Town, South Africa. The drafting agency is The International Institute for the Unification of Private Law (UNIDROIT). Countries began to ratify the Convention in 2003. Currently there are 77 Contracting States, with most of the large economies ratifying over the past decade.¹⁷ Figure 1a shows the status map of the Convention by the end of 2015. Among the large economies, the US ratified in 2004, India and the United Arab Emirates in 2008, China in 2009, Brazil in 2012, and Australia and the UK in 2015. From Figure 1b, it can be seen that around 70% of the global aviation market is exposed to the Convention by 2015.

2.2.1 Key Components

The mobility of an aircraft across jurisdictions creates discretion of the insolvency administrator in the case of an airline default, insolvency or reorganization. Consequently, it generates uncertainty in the probability, timing and procedure of aircraft repossession, which is considered a major friction in aircraft finance. The Convention was drafted with the objective of creating an enhanced and harmonized contracting environment. The two building blocks of the Convention are international registration of security interest and standard insolvency remedies, which are functionally similar to US Section 1110. The details are specified below.

A. International Registry. First, the Convention establishes an international legal registration system of security interests on aircraft transactions. It enables a creditor to officially register its international security interest if the debtor is situated in a member state. The security interest is recognized by all the Contracting States with agreed priority position.¹⁸ The International Registry system is fully electronic with 24/7 web access. As a result, the system greatly reduces potential conflicts over the assignment of security interest. According to [Djankov, McLiesh, and Shleifer \(2007\)](#), this sort of registry institution is usually associated with a more developed credit market.

B. Standard Insolvency Remedies. Second, and perhaps more importantly, the Convention provides consistent remedies in the event of an airline's insolvency. The Convention gives ratifying states the right to choose between the following three insolvency regimes: Alternative

¹⁷<http://www.unidroit.org/status-2001capetown> provides information on the current status.

¹⁸The priority scheme has the following main principles: registered international interests take priority over unregistered ones, earlier registrations take priority over later ones and the parties can vary priorities by agreeing and (for increased protection) registering subordination arrangements at the International Registry.

A, Alternative B and keeping their own insolvency laws. Alternative A is the so-called hard, rule-based version, which is most creditor-friendly. Effectively, it is an improvement over US Section 1110. It similarly defines a maximum 60-day waiting period, following which the creditor must be given the opportunity to take possession of the underlying aircraft object.¹⁹ In addition to Section 1110, Alternative A clarifies a debtor's obligation to preserve the aircraft and maintain its value during the waiting period.²⁰ Importantly, under this alternative, the ratifying states' courts have no powers of intervention. Alternative B is the so-called soft, discretion-based version, which is broadly similar to Alternative A, with one crucial difference in the engagement of local courts: under Alternative B, the local courts can determine whether, when, and on what terms the creditor can take possession of the underlying equipment at the expiry of the waiting period. The vast majority of countries have adopted Alternative A. Only Mexico has so far declared Alternative B, though it is currently considering switching to Alternative A. By and large, the speedy and less uncertain repossession process in ratifying states greatly improves the power of creditors.

From a practical perspective, the average worldwide enforcement delay for aircraft repossession is around 10 to 12 months without the Convention.²¹ Developing countries with weak creditor rights are likely to have a longer delay of up to two years. However, even in a country like the UK where creditor protection is strong, the pre-Convention waiting period could be substantially higher than the two-month maximum delay proposed by the Convention. According to the solicited opinions of a UK insolvency expert, the realistic worst case repossession delay would be 4 to 5 months for a UK airline. Moreover, before the Convention's introduction in the UK, British Airways would be required to provide a liquidity facility of 24 months for its EETC issuance. In contrast, the liquidity facility requirement for a US airline issuance is typically only 18 months. This 6-month gap, and the 60-day waiting period under Section 1110 of the US bankruptcy code, imply that the EETC market participants assume a repossession delay of up to 8 months in the UK. Therefore, the Convention is expected to speed up repossession in the event of airline insolvency and reorganization around the world.

2.2.2 Applicability

The Convention is widely applicable to aircraft equipment that satisfies certain size requirements. An airframe must be type certificated to transport eight persons including crew or goods in excess of 2,750 kilograms. An engine should have 1,750 pounds of thrust (or its equivalent) or 550 rated

¹⁹Most Contracting States choose a 60-day waiting period. There are a few exceptions that choose 30 or 40 days.

²⁰Under Section 1110, lenders must seek protection outside of Section 1110 in order to preserve aircraft.

²¹Based on the estimation by Aviation Working Group, see [Linetsky \(2009\)](#).

take-off horsepower (or its equivalent). All the aircraft types in my sample satisfy these size requirements.²²

Additionally, the debtor must belong to a Contracting State for the creditor to be protected by the Convention. I use an airline's country of incorporation, which also tends to be the country where the main business takes place, to determine the Convention status. Airlines mostly operate from the country of incorporation for the following reasons. The airline industry is heavily regulated with restrictions on the routes a carrier is allowed to fly.²³ Typically, an airline is not allowed to do business between two foreign countries.²⁴ Apart from the restriction on routes, domestic airlines enjoy advantages when it comes to obtaining valuable slots in busy home-country airports. This gives carriers an incentive to operate most of their business in the country of registration. Another critical point is that the decision on where to locate is usually based on business profiles rather than the financing environment. Thus, it is rare for airlines to change the country of incorporation because of this Convention.

2.2.3 Enforcement

The vast majority of the Contracting States have adopted Alternative A and agree to give re-possession rights to the creditor without the intervention of local courts. If necessary, a local court must also issue a court order by the end of the waiting period. To a certain extent, this guarantees effective enforcement in the actual insolvency proceedings of debtors. Moreover, the ratifying state “*is bound by international law to perform its obligations under the Convention even if this conflicts with national law.*” The Convention further limits the room of misinterpretation or misapplication of the relevant rule, by providing an Official Commentary with clear guidance on how to apply the rules. Nevertheless, a Contracting State could still violate its obligations under the Convention. Could this non-compliance cause problem in reality? Wool (2014) argues that the cost associated with non-compliance is high. He documents several factors that suggest the low likelihood of non-compliance, including reputation concerns, the political cost, and the co-sponsorship of the Convention by International Civil Aviation Organization (ICAO), which has a “*long-standing compliance culture*”.

²²There are also size requirements for helicopters, but the analysis on helicopters is beyond the scope of this paper.

²³The Freedoms of the Air are a set of commercial aviation rights granting a country's airlines the privilege to enter and land in another country's airspace.

²⁴There are only a few exceptions. The 5th freedom gives the right to fly between two foreign countries on a flight originating or ending in one's own country, such as Air India's flight between London and New York. The number of these routes is declining. The European Common Aviation Area (ECAA) promotes a more integrated within-Europe aviation market, in general allowing airlines to fly freely between two foreign European countries.

2.3 Entry Decision and Political Economy of the Reform

Since the ratification of the Convention is staggered, a natural question is what drives the decision to ratify. Why are there huge variations in the timing of ratification? Are there any political economy considerations? In the following context, I use a hazard model to study these questions. This part of my analysis also helps me to gauge the severity of the concern that the entry timing of this Convention coincides with investment opportunities or positive economic climates. More specifically, I use the following Weibull hazard model to study the timing of ratification in each country:

$$Pr_{entry_{j,t}} = \phi(\alpha_k + \pi' C_{j,t}) \quad (1)$$

where j indexes country, t indexes time, k indexes region, and $C_{j,t}$ summarizes a wide range of country-level predictors.

I first include macroeconomic factors to study whether the level or trend of economic development has any impact on the entry decision. Legal origin is examined, since it is argued to be highly correlated with legal protection of investors ([La Porta, Lopez-De-Silanes, Shleifer, and Vishny \(1998\)](#)), and may thus affect a country's attitude towards the Convention. The political system of a country may also matter, since democratic countries are more pro-competition and may welcome such a reform. To investigate whether the demand side matters, I add proxies for the level and trend of aviation market development. In the end, I include two variables related to the level of concentration and distortion in a country's aviation market. The argument is that large and inefficient incumbents have the incentive and also the ability to lobby against the Convention. These incumbents are likely to lose out as a result of reallocation. In light of the potential loss, they may impose pressure against the government's prospective adoption of the Convention. If this is the case, high concentration and severe distortion should predict a lower probability of entry.

Table 1 presents the results from a Weibull model. The methodology is similar to that of [Kroszner and Strahan \(1999\)](#), which uses the same Weibull model instead of the Cox proportional hazard model, so that the coefficients can be easily interpreted.²⁵ By converting the dependent variable into the log of the time to entry, the coefficients in Table 1 represent the percentage change in the time to entry into the Convention for a one-unit change in the dependent variables.

I find that most factors do not matter. As exhibited by column (2), GDP per capita, GDP growth, inflation, export to GDP ratio, import to GDP ratio, and government expenditure can

²⁵The argument is that the Cox proportional hazard model does not impose any structure on the baseline hazard rate. From the estimates of coefficients, we can only calculate relative hazard rates. The Weibull model, instead, imposes sufficient structure (a proportional hazard and an accelerated failure-time parameterization) and the estimates can be translated into a log expected time metric. But regardless of the translation of the metric, the likelihood function remains the same. In fact, fitting a Cox proportional hazard model does not affect the direction or the significance of my results.

hardly predict the entry decision. In fact, a casual look at the current status map (Figure 1) of the Convention reveals the wide divergence in the levels of economic development among all the Contracting States. In column (3), I find that population size and growth, especially population growth, have statistically significant effects. A 1% higher population growth is associated with a 10% drop in the expected time to enter the Convention. I thus include population size and growth in all regressions. Column (4) shows that the size of the domestic credit market does not matter. Nor do legal origins and the political system play a significant role in ratification decisions, according to columns (5) and (6). Column (7) shows that the size and growth of a country's aviation market in the pre-entry years do not seem to matter. Therefore, it is rather unlikely that favorable aviation market conditions have triggered the entry into the Convention.

Aligned with the above conjecture, two consistent and economically meaningful predictors are the levels of concentration and distortion in a country's aviation market. In all columns of Table 1, I find a positively significant coefficient on the proxy of concentration – Herfindahl-Hirschman Index (HHI), and a negatively significant coefficient on the Olley-Pakes covariance term, which can be considered as a proxy for the level of sector-wise distortion. The magnitude is also economically large: a one standard deviation increase in HHI is linked with a 20% to 30% increase in the time until entry, or about 2 years. On the other hand, a one standard deviation decrease in the covariance between size and productivity results in an over 10% increase in the time until entry, or around 1 year. Taking these two factors together, the ratification of the Convention is less likely in countries where the airline industry is more concentrated and more distorted. These results are consistent with a view that large and inefficient incumbents have the desire and also the ability to lobby against the Convention. As shown later in Table 6, these inefficient incumbents are likely to lose out when the Convention enters into force and the across-firm reallocation takes place. In a heavily regulated industry that operates under political influences, such a scenario of established rent-earning interests affecting government decisions is not difficult to imagine.

Critically, as argued later in Table 9, it is exactly these high-concentration, high-distortion countries that can benefit the most from the Convention. To put it differently, the unlikely adopters tend to be countries where the potential for improvement is greater and the investment opportunities are better. If anything, this suggests an underestimation of the Convention's impact.

A general message from the hazard model analysis is that the decision to enter the Convention seems fairly idiosyncratic, to the extent that it is not correlated with a wide range of measurable factors. Even though I shall further deal with endogeneity issues in Section 5, the evidence from the hazard model already helps to mitigate this concern.

2.4 Stock Market Response to the Reform

Since its introduction, the Convention has received extensive coverage by the media and legal practitioners.²⁶ There is a consensus among market participants that this reform is one of the most successful commercial law treaties and has fundamentally changed aircraft finance across the world. To further confirm that this convention has a real bite, I study its impact on stock prices of listed airlines.

More specifically, I focus on cumulative abnormal returns earned by airlines over the three-day period surrounding the ratification date of the respective country. Abnormal returns are computed as cumulative residuals of the market model estimated over the 200-day period starting 205 days before the announcement of the acquisition, where the relevant country's market index is used as the market proxy. I detect a 2.2% three-day abnormal return on average for listed airlines exposed to the Convention (Panel A of Table 2). The strong reactions in stock price suggest that the reform is unlikely to be fully anticipated by the market. Interestingly, a simple cross-sectional test reveals that the positive abnormal returns are enjoyed exclusively by healthier airlines (Panel B of Table 2). Airlines that go bust or are delisted within five years, on average, have a slightly negative abnormal return. Such comparison implies that efficient airlines can benefit more from the reform than inefficient ones. Given that there exist even more inefficient private airlines, the reform can be value-destroying for them. If this argument is true, the reform may have a distributive effect, allowing good firms to grow at the expense of others. In the empirical analysis below, this conjecture will be tested formally.

3 Data

3.1 Data Sources

I combine several datasets for the empirical analysis in this paper. Below is a brief description of the data sources. Appendix A provides the definition of variables.

FlightGlobal. The main data source is FlightGlobal, a leading producer of aviation market information. FlightGlobal provides an extensive database that tracks the ownership and operation history of each commercial aircraft. For each aircraft, the database also provides information on the type (e.g., Airbus 380), manufacturer, engine, purpose of operation (e.g., passenger, cargo, and so forth), delivery date, and date when the aircraft was scrapped, if appli-

²⁶The Cape Town Convention Journal is devoted to reviewing the law and practice related to the Cape Town Convention. Market leading media of the global aviation business, such as the Airfinance Journal, reports regularly on the Convention.

cable. FlightGlobal also reports detailed information on aircraft utilization. More specifically, at the individual aircraft level, one can observe the number of hours flown each month.

Airfinance Journal. Information on financing deals completed by airlines is taken from the Airfinance Journal. This dataset reports the name and country of the issuer, relevant date, deal structure, and the financial institutions involved in the deal. The Airfinance Journal covers around 8,000 deals that have taken place in more than 140 countries, beginning from 2000.

Bureau of Transportation Statistics. To study the variety of products provided to consumers, I extract information on routes, destinations and origins from *Air Carrier Statistics (Form 41 Traffic)- All Carriers*. The data are available monthly beginning in 1990.

AviationSafetyNetwork. The ASN safety database provides descriptions of airliner accidents from 1919 onwards. Information on all commercial airline accidents is first collected from ASN, and then matched to the country of the carrier.

Skytrax. Skytrax collects numerical customer ratings of individual flights, beginning in 2007. A customer can rate a flight experience on a scale of 1 to 5, regarding seating, cabin staff, food and beverages, in-flight entertainment, ground service and wifi.²⁷

UNIDROIT. The status of the Convention in different countries is obtained from UNIDROIT. The ratification date and the entry-into-force date are collected for each Contracting State.

Air Services Agreements Projector and the US Open Skies Partners. The WTO's Air Services Agreements Projector (ASAP) provides information on a Signatory's network of the bilateral Air Services Agreements (ASAs). Using this, together with the US Open Skies Partners list, I calculate proxies for the openness of the air transport policy of any given country.

World Development Index. Data on individual aircraft are matched to country-level macro variables from the World Bank's World Development Indicators (WDI) database according to each aircraft's operator country. I extract macro variables on GDP, population, inflation, import-export, financial sector development, and transportation industry development.

Legal, Polity, and Others. Data on legal origins are compiled by [La Porta, Lopez-de Silanes, and Shleifer \(2008\)](#) and data on political systems are from Polity IV Project. The Fraser Institute provides data on the Economic Freedom Index.

3.2 Summary Statistics

Table 3 shows the basic summary statistics. In Panel A, the sample consists of all commercial aircraft operating between 1980 and 2015. The unit of observation is at aircraft-year level.

²⁷Examples of ratings and reviews can be accessed through this link: <http://www.airlinequality.com/review-pages/latest-airline-reviews/>

There are in total over 50,000 unique aircraft in my sample and around 36,000 of them have information on utilization rate, i.e., monthly flying hours. The average aircraft in my sample is 11 years old, and it typically lasts 26 years before being scrapped. The technological age, defined as the number of years since the introduction of the underlying aircraft's type, is roughly 20 years. There are, however, some long-living types, such as the Boeing 737, which was first put into operation in 1968 and is still the most popular type today. A typical aircraft flies for approximately 210 hours per month, or 7 hours per day.²⁸ There are large variations across aircraft in terms of utilization, and the standard deviation is around 100 hours.

In Panel B of Table 3, I collapse the data at firm level and provide basic summary statistics. The sample consists of all airlines, including those providing slightly differentiated products, such as low-cost or leisure carriers. There are more than 8,200 airlines that have ever existed globally between 1980 and 2015. The average airline in my sample has around 20 aircraft in operation, with an average age around 15.5 years. The large standard deviation in both fleet size and age reflects considerable heterogeneities across firms. An airline typically operates its aircraft for 128 hours per month. Note that this value is substantially lower than the average utilization at the aircraft level, suggesting that there are a significant number of small and inefficient airlines.

Panel C of Table 3 presents country-level summary statistics. There are a total of 218 countries, and 64 of them has ratified the Convention by the end of 2015. The unit of observation is at country-year level. The average country has 12 carriers, but this varies considerably across countries. The US has more than 300 carriers by the end of 2015, while around small economies have three carriers or fewer. An average country has 125 aircraft in operation, with an average age of around 15 years. The average flying hours per month is around 160, again suggesting that countries with larger fleets are likely to use their aircraft more actively.

4 Empirical Specification

The main identification strategy exploits the staggered adoption of the Convention across countries. There are typically two important dates in the process of adopting the Convention: the ratification date and the entry-into-force date.²⁹ I use the ratification date as the time of treatment for the following reason. The Convention comes into force in the ratifying country on the

²⁸Around 2.7% of all observations in my sample have flying hours equal to zero. Those aircraft are typically parked and inactive. Some of them return to service after being sold to new carriers, while the rest return to air with the original operator.

²⁹For some countries, there is also a signature date, though this is unlikely to be the time of treatment. First, signing the Convention does not perfectly predict ratification later on. There are a few countries that signed early but never ratified the Convention. Second, many countries directly ratify without first signing the Convention. In the end, there is usually a large gap between signature date and ratification date. For example, this gap is eight years for Canada.

first day of the month following the expiration of three months after the ratification date. Therefore, once the Convention is ratified, it is guaranteed to take effect with a fully anticipated date. To benefit from the Convention, borrowers and lenders can deliberately delay the transactions until the entry-into-force date. This can create a drop in financing in the three-month interval between ratification and entry into force. As a result, the estimated coefficient can be inflated. To mitigate the contamination from borrowers' and lenders' responses in light of an anticipated event, I instead use the ratification date as the event date in the main specification.³⁰

As explained in Section 2.2.2, I use an airline's country of incorporation to determine the Convention status. There are two remaining issues regarding the sample construction: pre-existing deals and leasing.

Pre-existing Deals. In theory, the Convention does not apply retrospectively. In practice, contracts are often amended, extended, supplemented or replaced so that they are protected by the Convention.³¹ Since I do not have information on the exact financial contracting terms of each aircraft, I include the entire fleet in the estimation.

Leasing. For each airline, I do not differentiate between leased and owned aircraft. There are two reasons for this. During my sample period, airlines own more than half of their fleet. The rest are capital lease and operational lease. Following the GAAP, capital lease is classified as essentially equivalent to a purchase by the lessee and is capitalized on the lessee's balance sheet.³² Such leases are often intended as security and therefore aircraft under capital lease are similarly exposed to the Convention as under secured lending. Moreover, the distinction between capital lease and operational lease is clear on paper, but can be obscure in reality, especially when it comes to airline bankruptcy. In the US, disputes often arise regarding the proper legal classification: true lease or "disguised" financing. Judicial reasoning in such decisions requires case-specific and fact-specific analysis. The economic substance (rather than the form) of the transaction is the key determinant. Without detailed information on financial agreements regarding each aircraft, I cannot determine precisely whether an aircraft under lease should be classified as true lease or as disguised secured financing in bankruptcy.

In many other countries, the line between true leases and financing agreements is even more blurred. Local courts sometimes believe in creating equity rights for the lessees, making

³⁰This may not fully correct the bias created by rational expectations and follow-on responses of borrowers and lenders. Information on the ratification process may become available to them before the actual ratification date. I further verify this by investigating the dynamics of the Convention's impact. Furthermore, using the entry into force date as the event date hardly changes my results. The three-month interval between ratification and entry into force is negligible when the unit of time is year in the empirical analysis.

³¹For example, a newly created instrument, the Aircraft Object Security Agreement (AOSA), is becoming popular. This is an instrument that creates a new international interest, which would trigger the Convention and permit quick repossession.

³²The newest IFRS 16 changes the accounting treatment of off-balance sheet operating leases. For lessees, those lease becomes an on-balance sheet liability, together with a new asset on the other side of the balance sheet.

the lessor’s position closer to a secured creditor. These lessors are also likely to face issues with automatic stay. Considering this, all types of creditors with a security interest tend to be affected by the Convention to a certain extent. I thus simply use the entire fleet in the empirical analysis, regardless of its exact financing structure. Nevertheless, I also make sure the reallocation results go through using the subsample of the owned aircraft.³³

4.1 Regression Equations

The first goal is to evaluate the impact of the Convention on country-level real consequences. In particular, I am interested in aggregate productivity, which is proxied by monthly flying hours averaged across a country’s entire fleet. To do this, I estimate the following equation:

$$Y_{j,t} = \gamma_j + \alpha_{k,t} + \beta CTC_{j,t} + \theta' X_{j,t} + \varepsilon_{j,t} \quad (2)$$

where j indexes country, t indexes time and k indexes region³⁴. The dependent variable $Y_{j,t}$ can be average productivity, fleet size, technology etc, depending on the specification. Country and region \times year fixed effects are captured by γ_j and $\alpha_{k,t}$. The dummy variable $CTC_{j,t}$ denotes the status of the Convention in the respective country-year. It takes the value of one if country j is a Contracting State and zero otherwise. Country level control variables are summarized by $X_{j,t}$. In the basic specification, it includes five macro variables: $\ln(\text{GDP per capita})$, $\text{GDP per capita growth}$, $\ln(\text{population})$, population growth and $\text{population density}$. I further add in control variables to account for time-varying industry regulatory, institutional and political factors. The coefficient of interest is β , which is identified from the cross-country, cross-time variation in the Convention status.

I then use firm-level analysis to study whether the aggregate change in productivity can be explained by average within-firm effects. The regression equation is similar to Equation 2, except that the observation unit is firm-year and that firm fixed effects is used instead of country fixed effects.

To pin down the reallocation channel, I add interaction terms between the Convention’s status and firm-level pre-determined productivity:

$$Y_{i,t} = \gamma_i + \alpha_{j,t} + \beta CTC_{j,t} \times S_{i,t-1} + \delta S_{i,t-1} + \varepsilon_{i,t} \quad (3)$$

where i indexes firm, j indexes country and t indexes time. Firm and country \times year fixed effects are captured by γ_i and $\alpha_{j,t}$, respectively. The Convention status term, $CTC_{j,t}$, is ab-

³³The analyses on financing deals and credit allocation are unaffected since I focus on debt financing deals.

³⁴There are 6 regions in the main specification: North America, Central and South America, Europe, Asia Pacific, Africa and the Middle East. The results are the same when regions defined at a more granular level are used (22 regions according to United Nations groupings).

sorbed by country \times year fixed effects.³⁵ The interaction term $CTC_{j,t} \times S_{i,t-1}$ contains a pre-determined firm level characteristic, $S_{i,t-1}$, to capture the differential effect of the Convention on real outcomes. In most specifications, $S_{i,t-1}$ is the pre-determined firm-level average productivity (capacity utilization rate). In countries that have adopted the Convention by 2015, I use the productivity in the pre-convention year. In countries that have not adopted the Convention, I use lagged productivity at $t - 1$. The dependent variable $Y_{i,t}$ can be fleet size, technology, or financing, depending on the specification. The coefficient of interest, β , estimates the pre-post change in the responsiveness of resource allocation to productivity in countries adopting the Convention relative to the pre-post change in countries not adopting the Convention.

4.2 Endogeneity Concerns

The identification strategy treats the timing of the Convention’s ratification in a given country as exogenous. One may be worried that a country’s decision to ratify the Convention could be correlated with other omitted variables, such as investment opportunities in the aviation industry. If this argument is true, my results could be driven by factors other than the Convention. In section 2.3, I already provide evidence through a hazard model that the correlation between investment opportunities and the timing of the reform, if anything, seems to be negative. Moreover, I take the following steps to alleviate the concerns regarding the endogenous adoption of the Convention.

A. Dynamics. Many explanations related to coincident changes and reverse causation predict that the effects of the Convention would show up in the years prior to the actual ratification date. I therefore analyze the dynamic effect of the Convention in the years before and after the actual ratification date.

B. Strong versus Weak Ex-ante Creditor Protection. I split the sample into countries that are expected to be treated more by the Convention and those that are treated less. Countries with weak ex-ante creditor protection experience a remarkable boost in creditor protection upon ratification while those with strong ex-ante creditor protection experience less of a boost. If indeed the documented effect is caused by the Convention, I expect a larger impact among countries that have weak ex-ante credit rights.

C. Control Variables, Hazard Model and other Regulatory Shocks. I use a wide range of macroeconomic variables to control for country-specific shocks that can be captured by those variables. A further assurance is that in the hazard model used to formally study the decision

³⁵I also report results from the specification where region \times year fixed effects are included and $CTC_{j,t}$ is kept.

to enter the Convention, I find that most macroeconomic factors do not predict the timing of ratification in a systematic way. The two macro variables that seem to matter, GDP per capita growth and population growth, are already included as control variables.

To account for changes in pro-market aviation policies that could potentially confound the analysis, I calculate the Air Liberalization Index for each country-year. This index aggregates information on the number and terms of bilateral Air Services Agreements (ASAs) signed by each country and can be considered a proxy for the openness of a country's air transport policy.³⁶ To ensure robustness, I introduce two more measures for air transport policy. One is a simple count of the number of ASAs signed by each country. The other considers whether a given country has an Open Skies air transport agreement with the US.

I further control for political and general institutional factors. A time-varying democratic index is included to ensure that my results are unlikely to be driven by changes in the political system. The general (non aviation-sector-specific) institutional factors include: development of credit markets, measured by private credit to GDP; degree of economic freedom, measured by the Index of Economic Freedom; and degree of corruption, measured by the Corruption Perceptions Index.

D. Region \times Year Fixed Effects and Group-Specific Time Varying Trends. Next I include region \times year fixed effects in almost all specifications so that any region-specific trends are absorbed. In the main specification, I define six regions: North America, Europe, Asia Pacific, the Middle East, South America and Africa. To ensure robustness, I also define regions at a more granular level (22 regions according to United Nations Groupings). As the aviation industry is to a certain extent integrated at the regional level, investment opportunities are likely to be correlated within regions. For instance, Europe aims to integrate the aviation market across all EU members by implementing the European Common Aviation Area, or ECAA agreement, which could be considered a positive shock to the whole European aviation market. Another example is the clustered emergence and development of Middle Eastern airlines.

I further control for various group-specific time-varying trends. More specifically, I add the interaction term between year and group dummies to allow for differential time-varying patterns in investment opportunities for countries in different groups. This allows me to compare within countries that have similar characteristics.

³⁶The website https://www.wto.org/asap/resource/data/html/methodology_e.htm introduces the methodology for calculating the Air Liberalization Index for a given Air Services Agreement. This country-pair specific index is then aggregated at country level, weighted by the respective traffic that each Air Services Agreement covers.

5 The Effect of the Reform on Productivity and Reallocation

This section describes and discusses the effects of the Convention on real economic outcomes. I first document the direction and size of the Convention’s impact on aggregate productivity in the airline industry. I further unbundle this effect to highlight the importance of across-firm reallocation. This helps pin down the underlying mechanism through which creditor rights affect productivity.

5.1 Aggregate Country Level Effect

Numerous papers have documented the impact of creditor rights on lending.³⁷ Departing from this line of research, I focus on the real consequences of the Convention, and in particular, on aggregate productivity.

Table 4 shows how the Convention affects the aggregate productivity of a country’s aviation sector. By using aircraft utilization rate (monthly flying hours) as a measure of productivity, I find that the Convention has a strong, positive impact on aggregate country-level productivity. Following the adoption, average productivity across the entire fleet of a country increases by around 12%, as presented in column (1). This estimate is stable after including a few more macroeconomic controls variables (column (2)), such as import/export, investment intensity, and inflation.

One key concern of this estimation is that the timing of the Convention may coincide with regulatory changes in the aviation sector. To determine the validity of this argument, I include in the regression a time-varying measure of the openness of each country’s air transport policy. After adding in the weighted Air Liberalization Index, the basic finding does not change, as shown in column (3). In column (4), I use a simpler measure to capture changes in the openness of air transport policy. I count the number of Air Services Agreements signed by each country. The results are very similar to those in column (3). In column (5), I use a dummy variable capturing whether the country has entered an Open Skies air transport agreement with the US. Signing this agreement is considered an important move towards more pro-market policies. The results barely change from column (2).

One further concern is that changes in the political or institutional environment may account for my findings. For example, a more pro-market business environment may spur investment, including investment in the airline industry. To alleviate these concerns, I include the democratic

³⁷Most papers argue that strengthening creditor rights facilitates financing, including but not limited to La Porta, Lopez-De-Silanes, Shleifer, and Vishny (1997), La Porta, Lopez-De-Silanes, Shleifer, and Vishny (1998), Djankov, McLiesh, and Shleifer (2007), Beck, Demirgüç-Kunt, and Maksimovic (2008) and Haselmann, Pistor, and Vig (2010). A notable exception is Vig (2013), which finds that firms respond to stronger creditor rights by reducing secured debt.

index in column (6) and proxies for credit market development, economic freedom and corruption in column (7). The results are quantitatively similar to those in columns (1) to (5).

To tighten identification, I also control for various group-specific time-varying trends, and the results are almost the same as in the baseline specification. In column (2) of Table D2, I add in dummies for the interaction term between creditor rights index and year, to allow for different time-varying patterns in investment opportunities for countries with different levels of pre-convention creditor protection. The interpretation of the results in columns (3) to (8) is similar. The general message is that if we compare countries that have similar characteristics, those that ratified the Convention experience a quantitatively similar increase in average productivity.³⁸

Next, I examine the dynamics of the relationship between stronger creditor protection and aggregate productivity. I consider a 12-year window, spanning from 5 years before the Convention's introduction to 7 years afterwards. Year minus one is the year before the Convention's introduction, and I estimate the dynamic effect relative to this year. Figure 2a depicts the estimated coefficients and the 95% confidence intervals. The time-series pattern confirms that the impact of the Convention only materializes when the Convention takes effect. The coefficients in the years before the entry are not significantly different from zero, while there is a clear positive post-trend. To account for the fact that aircraft come in different types and sizes, I further weight flying hours by each aircraft's seating capacity. Using this size-weighted productivity measure as the dependent variable, Figure 2b shows similar a dynamic effect of the Convention.

In addition to the gain in productivity, I also document the Convention's impact on country level capital accumulation and average technology. In column (1) of Table C1, I use the fleet size of each country as the dependent variable. The coefficient on the Convention status *CTC* is around 0.2 and significant at the 1% level, indicating that fleet size increases by roughly 20% after the implementation of the Convention. Airlines seem to acquire new aircraft and retire old ones at a higher rate, as illustrated by columns (2) to (4). They operate more new aircraft built by the manufacturers (column (2)) rather than second-hand ones from foreign airlines or dealers (column (3)). Consistent with the documented turnover, I observe a younger fleet with newer technology, similar to Benmelech and Bergman (2011). Column (5) shows that ratifying the Convention reduces the average age of aircraft by approximately 2.2 years, or 15% of the mean age of 15 years. Column (6) shows that the Convention is also associated with younger aircraft technological age. The effect is highly significant: ratifying the Convention reduces the average technological age by 2.6 years, or roughly 10% of the average technological age.

³⁸One might worry that the increase in productivity merely reflects a change in business profiles. If the Convention allows firms to invest more in widebody aircraft that are mainly used for long-haul trips, fleet utilization may go up mechanically. However, I find that the Convention does not affect the relative share of widebodies as opposed to narrowbodies. The surge in monthly flying hours is therefore likely to be driven by true improvements in average efficiency levels rather than a shift towards more long-haul business.

5.2 Unbundling the Gain in Aggregate Productivity

At the aggregate level, I show that stronger creditor protection leads to gains in aggregate productivity. Decomposing this productivity growth for a balanced panel typically yields the following three terms:

$$\begin{aligned}
 P_t - P_{t-1} &\equiv \sum_i s_{i,t} \omega_{i,t} - \sum_i s_{i,t-1} \omega_{i,t-1} \\
 &= \underbrace{\sum_i s_{i,t-1} (\omega_{i,t} - \omega_{i,t-1})}_{\text{within}} + \underbrace{\sum_i (s_{i,t} - s_{i,t-1}) \omega_{i,t-1} + \sum_i (s_{i,t} - s_{i,t-1}) (\omega_{i,t} - \omega_{i,t-1})}_{\text{reallocation}} \quad (4)
 \end{aligned}$$

where P denotes aggregate productivity, s denotes market share, w denotes firm-level productivity, i indexes firm and t indexes time. The first term is the pure within-firm component and captures the contribution of within-firm productivity improvements. The second and third terms are often referred to as the reallocation effects, because they are related to changes in market share.³⁹ The second term captures the contribution of market share changes between firms, holding their productivity unchanged. The third term is a “cross” term and captures the covariance between changes in market share and changes in productivity. This cross term contributes positively to productivity growth if market shares and firm-level productivity move in the same direction.

From Equation 4, it is clear that part of the gain in aggregate productivity can come from individual firm-level changes (a within-firm effect). At the same time, there can also exist a potentially very important channel through within-industry reallocation of key resources (a reallocation effect). In the following context, I present evidence that the reallocation effect dominates in my setting.

5.2.1 Within-firm Average Effect

Table 5 replicates the regressions in Table C1 using firm-level data. I further include firm fixed effects, and the coefficients thus indicate the average firm-level effect imposed by the Convention. Across different specifications, I find that the coefficients are all close to zero and insignificant. Figure 2c shows the dynamic effect of the Convention on firm-level asset utilization rate. The coefficients on all years, before or after the Convention, are not statistically different from zero.

The typical productivity decomposition implies that firm-level regression needs to be value-weighted (see the within term in Equation 4). In this way, the regression coefficient can better represent the within-firm component, which is effectively a weighted sum of the productivity

³⁹In addition, allowing for entry and exit requires two more terms that capture the contributions of entry and exit. These two terms are also related to industry dynamics and can be considered broadly as reallocation effects (between surviving, entering, and exiting firms).

changes holding firms’ market share constant. I repeat the above firm-level regression, weighted by lagged firm size. The results are shown in Table D3 and the coefficients are very similar to those in Table 5. The dynamics figure (Figure 2d) confirms that the effect is close to zero either before or after the entry year.

The evidence that the Convention has limited effect on average firm-level productivity seems convincing. If an average firm does not become more productive individually, the major contributor to aggregate productivity growth has to come from across-firm dynamics. The following section empirically identifies across-firm changes.

5.2.2 Across-firm Reallocation Effect

If the unified contracting framework enabled by the Convention indeed reduces financing frictions and fixes misallocation, firms with higher productivity should be able to grow and use new technology, at the cost of their less productive competitors. This idea is in line with the argument in Banerjee and Duflo (2005), Restuccia and Rogerson (2008), Hsieh and Klenow (2009), Bartelsman, Haltiwanger, and Scarpetta (2013) and Midrigan and Xu (2014).

I test the above prediction by including in the regression an interaction term between the Convention status and the pre-determined firm-level productivity. If reallocation takes place in the hypothesized direction, the coefficient on this interaction term will be positive (negative) for specifications where fleet size (fleet age or technological age) is the dependent variable. A reduction in age corresponds to aircraft of a younger vintage while a reduction in technological age corresponds to aircraft with newer technology. Consistent with this conjecture, I find strong evidence that more efficient asset users (i.e., airlines with higher average monthly flying hours) are able to expand and adopt new technology at the expense of inefficient asset users after the Convention takes effect.

In column (1) of Table 6, the dependent variable is log total number of aircraft in a firm’s fleet. The coefficient on $CTC \times Productivity$ is positive, while that on the Convention status term CTC is negative. The coefficients are both highly significant at the 1% level. The reallocation effect is economically large: a one standard deviation increase in productivity translates into a 13% higher increase in fleet size. The negative coefficient on CTC indicates that for some airlines with low average productivity, their size may shrink following the Convention’s implementation. According to the estimated coefficients, a quarter of firms are subject to contraction. While the total number of aircraft might be too simple a measure of fleet size, I also construct alternative measures to account for the fact that aircraft have different sizes and capacities. In Table D4, I show results with three additional measures of size: total number of seats, total maximum take-off weight and total wingspan of the fleet. The results are highly similar to those in column (1) of Table 6.

In column (2) of Table 6, the dependent variable is the average age of an airline’s fleet. As expected, the coefficient on $CTC \times Productivity$ is negative, suggesting that more productive airlines are able to operate aircraft with younger vintage, while less productive airlines are left with an obsolete fleet. The magnitude is such that a one standard deviation increase in productivity translates into a 0.9-year greater reduction in fleet age. The results are similar when I change the dependent variable to technological age (column (3)). Therefore, airlines that better utilize their fleet can acquire newly designed aircraft with cutting-edge technology, which may further improve their productivity. Combined with the fact that these productive firms simultaneously expand their fleet, the covariance between changes in market share and changes in productivity is positive, suggesting that the “cross” term has a positive role in driving up aggregate productivity.

Columns (4) to (6) of Table 6 repeat the analysis in columns (1) to (3) with country \times year fixed effects. This is a sharper test compared with columns (1) to (3), since country-specific macroeconomic shocks or trends can be absorbed. Note that the Convention status term CTC and macroeconomic variables, all varying at country-year level, are absorbed. The results are quantitatively similar to those in columns (1) to (3). This partially eases the concern that the implementation timing of the Convention coincides with country-level macroeconomic developments.

To ensure that the results are not driven by outliers, I also use a non-continuous measure of productivity. I categorize firm productivity into three groups and interact this categorical variable with CTC . The results are collected in Table D6. It can be seen that firms in the least productive tercile are subject to a 13% contraction due to the Convention, while firms in the most productive tercile experience a more than 20% expansion.

In Figure 3, I examine the dynamics of the reallocation effect. Figure 3a depicts the estimated coefficients and the 95% confidence intervals when the dependent variable is fleet size. I observe that the coefficients on the interaction terms between relative time dummies and productivity are not significantly different from zero in the years before the reform. However, the coefficients become positive and significant after the Convention takes effect. I find that the reallocation effect materializes rather quickly and flattens out five years after the Convention’s introduction, suggesting a permanent drop in misallocation. Figure 3b depicts a similar trend using an alternative measure of firm size – total number of seats – as the outcome variable. Moreover, Figure 3c and Figure 3d provide consistent patterns regarding fleet technology.

One potential concern is that the productivity measure might reflect the quality and vintage of the capital a firm deploys rather than the firm’s efficiency level. Airlines may be able to fly more intensively because they have a younger fleet and more redeployable assets.⁴⁰ At the same

⁴⁰Newer planes usually fly more intensively, since they require less maintenance and engine overhauls compared to older ones. More redeployable models can be used more intensively due to their flexibility.

time, these assets have a higher debt capacity, allowing a firm to borrow more and expand after the Convention takes effect. I provide evidence that the documented reallocation effect is a result of fundamental differences in firms' efficiency levels when deploying *similar* assets. More specifically, I use age- and type-adjusted productivity to control for the potential differences in asset quality. The results are robust to this adjustment. As presented in Table D5, the direction and significance of the effect are not affected.

Table 7 further shows that unproductive firms shrink by a large margin and start to exit. The estimate in column (1) suggests that the probability of substantial downsizing – by at least 50% – goes up significantly. In a similar vein, the probability of exit also increases for unproductive firms after the Convention takes effect. A one standard deviation drop in productivity translates into a 1.6 percentage point higher probability of exit. Considering that the unconditional probability of exit in the airline industry is 6-8%, the economic magnitude is fairly large. I also find that around 20% of airlines active before the reform exit in the five years following the reform.

How can we reconcile the above reallocation results with the 11.7% gain in aggregate productivity in Table 4? Based on the point estimates in Table D6 and summary statistics on size and productivity of each group, I can roughly calculate how much the documented reallocation effect among existing firms can contribute to overall productivity growth. I find that shifts in relative firm size or market share can explain half of the gain in aggregate productivity, or around 6%. A small portion, 1% to 2%, can be explained by the “cross” term, or the positive covariance between changes in market share and changes in productivity. Exit of inefficient airlines can account for another 4%.⁴¹ The contribution of entry is negligible since newly entered airlines are small and inefficient when they start, but in a few years they converge to the average industry-level productivity as they grow. Thus, adding up the contributions of different components suggests a magnitude in line with the estimated aggregate productivity growth.

As a result of the substantial reallocation, I detect a higher covariance between firm size and productivity. This covariance term, or the Olley-Pakes covariance, is argued by Bartelsman, Haltiwanger, and Scarpetta (2013) to be a more robust moment than the dispersion in productivity to capture the level of distortion. Figure 4a shows how this covariance term varies with more countries ratifying the Convention. The upward trend indicates that with more Contracting States, the covariance between firm size and productivity increases, implying lower distortion in the global airline industry. Figure 4b has the share of aircraft in Contracting States on the x-axis and a similar upward trend is observed.

⁴¹The market share of these exiting airlines is around 9% pre-reform. They are on average 40-50% less productive than the surviving airlines.

5.3 Cross-sectional Heterogeneity

To tighten identification, I study the heterogeneity in the Convention’s influence across countries. I split the sample based on the pre-convention creditor rights in each country. Upon the Convention’s adoption, countries starting with weak ex-ante creditor protection should experience a remarkable boost in creditor protection, while countries that already have strong protection should experience less of a boost. Thus, the treatment effect of the Convention should be stronger for countries with weak ex-ante creditor protection.

To empirically test this, I use the creditor protection index proposed by [La Porta, Lopez-De-Silanes, Shleifer, and Vishny \(1998\)](#) and classify countries into two subgroups. Subgroup “Weak” (“Strong”) includes countries whose index is below or equal to (above) 2 (the index ranges from 0 to 4). Table 8 presents the results. Indeed, I find that the increase in productivity and the reallocation effect are both concentrated in countries that have weak ex-ante credit rights. Columns (1) and (2) compare the productivity growth between these two subgroups, and the coefficient on CTC is substantially larger for the “Weak” group (column (1)) than for the “Strong” group (column (2)). Columns (3) to (6) compare the across-firm reallocation effect, and the coefficients on $CTC \times Productivity$ in columns (3) and (5) are significantly greater than those in columns (4) and (6).

It is also interesting to ask which countries are in a position to benefit more from reallocation. I split the countries into two groups with differential levels of competition and distortion in the airline industry. One group includes North America and Europe, and the other group covers the rest of the world.⁴² The first group has lower a HHI (0.37 vs. 0.59), suggesting less concentration, and has higher covariance between size and productivity (0.41 vs. 0.10), suggesting less distortion. The differences in both metrics are highly significant. By comparing columns (1) and (2) in Table 9, I find that the increase in aggregate productivity is mainly driven by the second group. More importantly, the across-firm reallocation is also concentrated in this group which can be characterized by higher concentration and more distortion. In column (3), the coefficient on $CTC \times Productivity$ is positive and highly significant, while that in column (4) is of a much smaller magnitude. Comparing columns (5) and (6) yields a similar pattern. Taken together, it seems that countries in which the airline industry is concentrated and severely distorted can benefit more from the Convention.

⁴²There are alternative ways to split the sample. The findings here are not sensitive to how the sample is split as long as it is divided into a more developed vs. less developed market. For example, the results are robust to splitting the sample by pre-treatment GDP per capita. I choose to compare North American and Europe with the rest of the world for the following two reasons. First, it does not suffer from any issue of missing observations. Second, the aviation market is integrated to a certain extent at the regional level.

6 Why does the Reform Affect Reallocation?

The tests above exhibit a strong and robust reallocation effect. However, it remains important to understand why the Convention triggers reallocation. I propose two potential explanations: (i) easier asset redeployment from unproductive towards productive firms; and (ii) the influx of foreign financiers and their financial innovations. These two channels relate to quicker physical capital reallocation ex-post and more efficient credit allocation ex-ante.

6.1 Efficient Repossession and Asset Redeployment

One direct explanation for reallocation is easier asset repossession and a less disruptive bankruptcy process enabled by the Convention. Capital that was previously stuck with distressed or bankrupted airlines can now be quickly redeployed to healthier and more efficient airlines. If this is the case, asset redeployment should become easier and faster under the Convention, especially when the previous asset owner is in distress.

To verify this prediction, I investigate the utilization rate of an aircraft around transactions. I back out transactions from annual reports on aircraft ownership and define an indicator for the years around transactions. The indicator is denoted by *Transaction* and equals one if the aircraft is in its final year with the previous operator and in its first year with the new operator.⁴³ If indeed the Convention contributes to more efficient asset redeployment, the aircraft should be parked for a shorter period before being transferred to its new user post-convention than pre-convention. As a result, the average productivity of that aircraft during the transaction years should be higher. In a regression framework, the coefficient on the interaction term, $CTC \times Transaction$, should be positive when the dependent variable is utilization rate for each aircraft-year.

Table 10 provides the statistical evidence. In column (1), I find that a typical aircraft around transactions flies 11% more per year after the adoption of the Convention. Equivalently, an aircraft is parked for roughly three months less before being utilized by a new operator.⁴⁴ Column (2) shows similar results when country by year fixed effects are included. Note that in these regressions, aircraft age by aircraft type fixed effects are included to ensure fair comparison across different aircraft.

⁴³The aircraft may also stay with a dealer or financier in between. If it stays only a brief time with the dealer or financier, this is not reflected in the data. If it stays long enough, for example, if the year end snapshot indicates that the aircraft is with the financier, *Transaction* also equals one for that year as the aircraft is not in the hands of an active asset user. On average, for each transaction, *Transaction* equals one for 2.3 years.

⁴⁴Accordingly to my definition, a typical aircraft spends 2.3 years around a transaction, or *Transaction* equals one for 2.3 years. 11% higher productivity per year translates into $0.11 \times 12 = 1.32$ fewer months being parked. The overall holding duration is therefore reduced by $2.3 \times 1.32 = 3.04$ months.

Crucially, I further find that quicker asset redeployment is almost exclusively driven by failing airlines. I categorize all transactions into two groups depending on whether the transaction involves failing airlines. I define failing airlines as those that are about to exit the market within three years.⁴⁵ In columns (3) and (4), the sample excludes sales by healthy airlines such that the regression compares the productivity discount around sales by failing airlines as opposed to regular operation periods pre-convention versus this discount post-convention. The coefficient on $CTC \times Transaction$ is larger compared with that in column (1), indicating a greater increase in average productivity for sales by failing airlines. The corresponding reduction in holding duration is estimated to be around 6 months.⁴⁶ On the contrary, for normal sales by healthy airlines, the Convention does not seem to affect the productivity discount around transactions or the holding duration, as shown in columns (5) and (6). This suggests that the faster redeployment is due not to lower transaction costs in general, but to reduced frictions when dealing with failing airlines' assets.

The evidence from Table 10 supports the view that the Convention facilitates the redeployment of physical assets. In addition, I observe 15% to 20% more asset redeployment after the reform, largely driven by assets flowing from inefficient users to efficient users. As the Convention also drives out inefficient airlines, such redeployment of valuable assets is an important mechanism through which economic costs of distress and bankruptcy can be reduced. When the Convention has been in place for a longer time, bankruptcy proceedings are expected to become more predictable and efficient. Both debtors and creditors can potentially rely more on established procedures to address restructurings and asset redeployment.

6.2 Foreign Financiers and Financial Innovations

One key characteristic of the Convention is that it not only provides strong creditor protection, but it also provides it in an internationally consistent manner. This highly integrated contracting framework should in theory encourage the involvement of foreign financiers in aircraft finance. Arguably, these financiers tend to be more responsive to marginal productivity in the process of allocating their funds, compared with their local counterparts. The reason could be related to the political view of government ownership of banks. Due to the high cost of aircraft, the local financiers in the airline industry are likely to be large, state-owned banks that operate under political influence and therefore allocate credit less efficiently. [La Porta, Lopez-De-Silanes, and Shleifer \(2002\)](#), [Sapienza \(2004\)](#), [Khwaja and Mian \(2005\)](#) and [Haselmann, Schoenherr, and Vig \(2018\)](#) all provide evidence on the undesirable features of political involvement in bank credit allocation. Moreover, these foreign financiers may introduce innovative financing instruments

⁴⁵The results are robust to alternative definitions such as airlines exiting within five years or experiencing substantial downsizing.

⁴⁶Based on the estimated coefficients in column (4), the holding duration is around 10 months pre-convention and 4 months post-convention.

that were previously only available in a certain contracting environment (for example, US Section 1110), with which the financiers are familiar. In the following context, I establish the central role of foreign financiers in boosting credit allocative efficiency.

To formally test this foreign financier channel, I collect the deal arranger information and identify whether the financier involved in each deal is a domestic one or an international one. The data contain all airline financing deals from 2000, for which the debt arranger information is available. Aggregating across deals in each country-year, I carry out country-level tests using the specification in Equation 2. The results are presented in Table 11. Column (1) examines the total number of financing deals involving foreign financiers. The coefficient on the Convention status *CTC* is economically large and significant. Column (2) shows the Convention's impact on the number of local deals. I find the effect to be much smaller and insignificant, compared to column (1). Column (3) confirms that following the Convention's ratification, the share of deals involving foreign financiers goes up significantly, suggesting their growing role in aircraft finance. There is also a surge in the number of active unique foreign aircraft financiers in the Contracting States, as displayed in column (4). The results indicate that globally consistent strong creditor protection indeed encourages the entrance of foreign financiers.⁴⁷

These expanding foreign financiers, on the one hand, capture a larger market share in aircraft finance. On the other hand, they introduce new, innovative financing instruments to the treated countries, which may further enhance their credit allocative efficiency. Column (5) of Table 11 shows that there are more diversified methods to finance aircraft equipment following the introduction of the Convention. Indeed, innovative financing instruments, such as EETCs, became available to non-US airlines only when the Convention took effect. These well-established products to finance aircraft equipment were initially developed in the US, largely owing to the implementation of US Section 1110, with which financiers, investors and rating agencies are familiar. The Convention, by providing similar prompt and predictable recourse to aircraft, has lent support to the introduction of these innovative financing instruments outside the US.

The influx of foreign financiers and the introduction of innovative financing instruments are expected to promote better credit allocation. To test this, I compare credit allocative efficiency before and after the introduction of the Convention. The regression specification primarily follows Equation 3, and the dependent variables summarize information on financing deals completed by airlines. For each firm-year, I count the number of financing deals completed and calculate the total value of these deals. Table 12 presents evidence on higher credit allocative efficiency after the introduction of the Convention. It can be seen that more productive firms

⁴⁷Under the above political view, one other prediction is that countries with high government bank ownership could benefit more from the Convention. The allocation of credit in these countries tends to be less efficient and is expected to improve more with stronger creditor protection and the resulting influx of foreign financiers. Consistent with such conjecture, I find that the gain in productivity and the across-firm reallocation are mostly observed in countries with significant government intervention in the banking sector. See Table C2.

close a larger number of financing deals (column (1)), representing a significantly higher value (column (3)). The point estimate in column (3) suggests that a one standard deviation increase in productivity translates into a 20% greater increase in the loan volume. Columns (2) and (4) include country \times year fixed effects to absorb any observed or unobserved country-specific changes that may affect the estimation. The results remain unchanged. The findings here also confirm the role of credit allocation in driving the differential effects of the Convention for productive versus unproductive firms.

Taken together, the internationally-unified contracting framework encourages the involvement of foreign financiers to capture a higher market share in aircraft finance and introduce innovative financial instruments. Both components tend to result in better allocation of credit.

7 Industry Dynamics and the Consumers

This paper has so far discussed the impact of the Convention on the producers' side, i.e., the airlines. Equally important is to investigate its implications for consumers. This allows us to paint a more complete picture of the welfare gains. In the following context, I first examine how the documented reallocation reshapes the aviation business. Then I explore whether any of the effects pass on to consumers.

7.1 Industry Dynamics and Competition

As a result of substantial reallocation and entry and exit activities, the Convention has helped to reshape the aviation industry. I find that there are more airlines operating in the Contracting States, mainly driven by the entry of specialized airlines (e.g., low cost or leisure carriers) that provide differentiated products as compared with the traditional mainline business (e.g., legacy full service airlines). The statistical evidence is presented in Table 13. Column (1) shows that an average Contracting State has approximately three more airlines after the Convention takes effect. Importantly, this is mostly fueled by the emergence of more specialized carriers (column (3)) while the number of mainline carriers drops (column (2)). In terms of average carrier size, I find that both mainline and specialized carriers scale up. Taken together, this suggests that the Convention triggers consolidation in the mainline business and encourages the creation of new, differentiated products provided by specialized carriers. Table 14 further shows that competition intensifies following the introduction of the Convention, especially in countries that started with a highly concentrated aviation sector. Both the HHI and market share of the top airline decrease in these countries. However, do such changes ultimately bring benefits to consumers?

7.2 Product Variety and Quality

In this subsection, I evaluate the Convention's impact on product variety and service quality, which are important aspects of consumer welfare.

7.2.1 Product Variety

Consumers value direct flights, so I first examine the number of direct routings available to each country's consumers. I count the number of unique routings between each country and the US.⁴⁸ Column (1) of Table 15 shows that the consumers in a ratifying country are offered roughly 15% more direct routings to the US. Similarly, these consumers can fly to more destinations in the US (column (2)) from more cities in their home country (column (3)). Including the Open Skies agreement with the US in the regression does not change my findings, as shown in columns (4) to (6).

7.2.2 Product Quality

I now study whether the Convention has any implications for the quality of products offered to consumers. I focus on two aspects of quality: an objective dimension exploring the safety of air travel and a more subjective dimension relying on ratings from consumers. I use country-level regressions to provide evidence on the aggregate effect.

The results are presented in Table 16. Columns (1) to (4) study the safety of air travel. In column (1), the negatively significant coefficient on the Convention status *CTC* suggests a reduction in the total number of aviation accidents. The number of distinct airlines involved in accidents also declines, as shown in column (2). Fewer fatalities also seem to be caused by aircraft accidents, according to columns (3) and (4).

Regarding service quality, I rely on data from Skytrax, which asks consumers to rate airlines on a scale of 1 to 5. In column (5), I find that the average customer rating increases by 0.27, or 10% of the average rating. The proportion of extremely low ratings (1 out of 5) also drops by 10 percentage points, as suggested by column (6). Most importantly, a remarkable decline in the standard deviation of the ratings is seen in column (7). The magnitude corresponds to 15% of the average dispersion. Therefore, airlines tend to provide better and more consistent service after the Convention is introduced.

⁴⁸I study routes to the US only due to both data limitations and the importance of the US market.

8 Discussions

There are several remaining concerns regarding the overall evaluation of the Convention. Below, I discuss two potential downsides of the Convention.

One potential concern is that the increased fleet size and upgraded technology may not turn into actual air traffic. For example, airlines may fly half-empty aircraft after the expansion of their fleet. If this is true, the Convention can destroy value by encouraging over-investment that leads to overcapacity. However, this is not the case since I find large increases in the number of air departures and the number of air passengers, as can be seen in columns (1) to (2) in Table C3. The magnitude is greater than the increase in the fleet size, consistent with the observed higher aircraft utilization rate.

Another concern is that the aviation industry may grow at the expense of other transportation business—for instance, the rail industry. I address this concern by examining developments in the rail industry around the Convention’s implementation. No significant changes are detected in the total rail route lines (column (3)) and the number of rail passengers (column (4)) after the Convention takes effect. Therefore, my estimates are unlikely to be driven by the redistribution of business within the transportation industry.

In short, these additional tests assure that the aviation industry following the introduction of the Convention is not progressed at the expense of inefficient investment and overcapacity or the rail industry.

9 Concluding Remarks

By exploiting the staggered adoption of an international Convention, this paper aims to understand the role of resource reallocation in shaping the link between creditor rights and real economic outcomes. The Convention imposes globally consistent creditor protection in the Contracting States in two ways. It enables international registration of security interests, and importantly, it also provides rapid repossession in cases of default. Following the Convention’s adoption, productive firms are able to finance, expand and adopt new technology, at the cost of unproductive firms. Such reallocation is a major contributor to aggregate productivity growth. I further provide evidence that reallocation is facilitated by (i) easier and quicker asset redeployment; and (ii) the influx of foreign financiers and their financial innovations. In addition, the reform seems to generate benefits for consumers.

The paper examines one important, but special industry. Aircraft are valuable, identifiable and redeployable. These features mean that abundant data is available on asset utilization and ownership, but at the same time suggest that the reallocation effect documented in this paper

may be an upper bound. In other significant industries such as shipping, railways, trucking or satellite, assets share similar characteristics and the conclusion of this paper is likely to apply. In fact, a new protocol to the Cape Town Convention on matters specific to *agricultural, construction* and *mining* equipment is currently being negotiated.⁴⁹ Furthermore, intangible assets, such as patents, are also transferable. Having a globally integrated legal framework to protect creditors' interest in intangible assets may unleash the debt capacity of patents. Caution is required, however, in extending the findings to industries crowded with firm-specific or low-tractability assets. Although a formal and harmonized legal framework may still encourage the entry of new and efficient lenders, the movement of physical assets in cases of default is more difficult. A comforting fact is that with global integration and standardization, and innovations in asset tracking, such as blockchain technology, asset redeployment is expected to become easier over time.

This paper seems to agree with the existing literature on law and finance highlighting the benefits of stronger creditor protection, but it presents one important caveat. I find that aggregate productivity gains mostly stem from the reshuffling of resources and output, accompanied by the scaling down and exit of inefficient firms. From a policy perspective, such reallocation can generate complicated welfare implications due to displacement of labor and capital. This may help to explain why the Cape Town Convention, despite the documented economic benefits, is not adopted by all countries. In future work, one interesting direction would be to carefully study the political economy of creditor protection and understand why certain (seemingly) welfare-enhancing reforms do not always happen (Syverson (2011)).

⁴⁹<https://www.unidroit.org/work-in-progress/mac-protocol> provides information on the recent progress of this protocol.

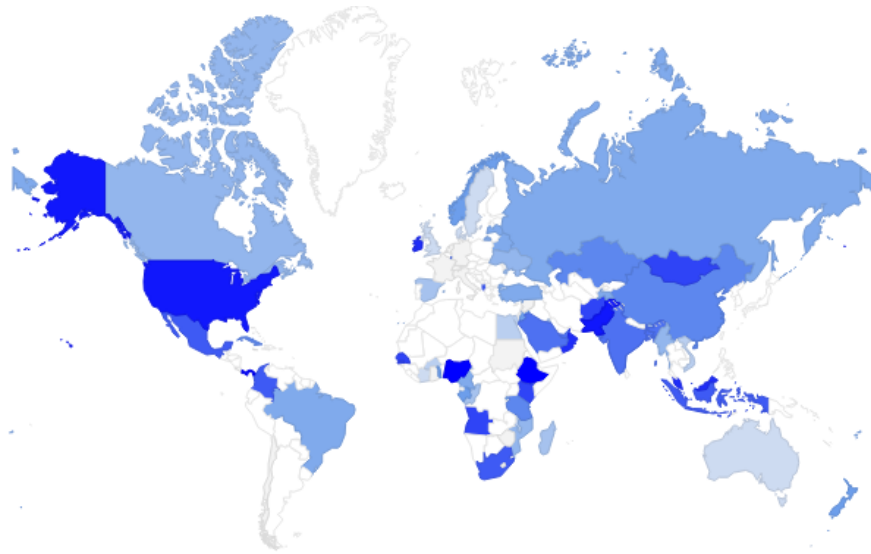
References

- Acharya, Viral V., Yakov Amihud, and Lubomir Litov, 2011, Creditor rights and corporate risk-taking, *Journal of Financial Economics* 102, 150–166.
- Adler, Barry E., Vedran Capkun, and Lawrence A. Weiss, 2013, Value Destruction in the New Era of Chapter 11, *The Journal of Law, Economics, and Organization* 29, 461–483.
- Aghion, Philippe, and Patrick Bolton, 1992, An Incomplete Contracts Approach to Financial Contracting, *The Review of Economic Studies* 59, 473–494.
- Bai, John (jianqiu), Daniel Carvalho, and Gordon M. Phillips, 2018, The Impact of Bank Credit on Labor Reallocation and Aggregate Industry Productivity, *The Journal of Finance* Forthcoming.
- Banerjee, Abhijit V., and Esther Duflo, 2005, Chapter 7 Growth Theory through the Lens of Development Economics, in Philippe Aghion, and Steven N. Durlauf, ed.: *Handbook of Economic Growth*, vol. 1 . pp. 473–552 (Elsevier).
- Bartelsman, Eric, John Haltiwanger, and Stefano Scarpetta, 2013, Cross-Country Differences in Productivity: The Role of Allocation and Selection, *American Economic Review* 103, 305–334.
- Beck, Thorsten, Asli Demirgüç-Kunt, and Vojislav Maksimovic, 2008, Financing patterns around the world: Are small firms different?, *Journal of Financial Economics* 89, 467–487.
- Benmelech, Efraim, and Nittai K. Bergman, 2011, Vintage capital and creditor protection, *Journal of Financial Economics* 99, 308–332.
- Bolton, Patrick, and David S. Scharfstein, 1990, A Theory of Predation Based on Agency Problems in Financial Contracting, *The American Economic Review* 80, 93–106.
- , 1996, Optimal Debt Structure and the Number of Creditors, *Journal of Political Economy* 104, 1–25.
- Calomiris, Charles W., Mauricio Larrain, José Liberti, and Jason Sturgess, 2017, How collateral laws shape lending and sectoral activity, *Journal of Financial Economics* 123, 163–188.
- Campello, Murillo, and Mauricio Larrain, 2016, Enlarging the Contracting Space: Collateral Menus, Access to Credit, and Economic Activity, *The Review of Financial Studies* 29, 349–383.
- Cole, Harold L., Jeremy Greenwood, and Juan M. Sanchez, 2016, Why Doesn't Technology Flow From Rich to Poor Countries?, *Econometrica* 84, 1477–1521.
- Dewatripont, Mathias, and Jean Tirole, 1994, A Theory of Debt and Equity: Diversity of Securities and Manager-Shareholder Congruence, *The Quarterly Journal of Economics* 109, 1027–1054.

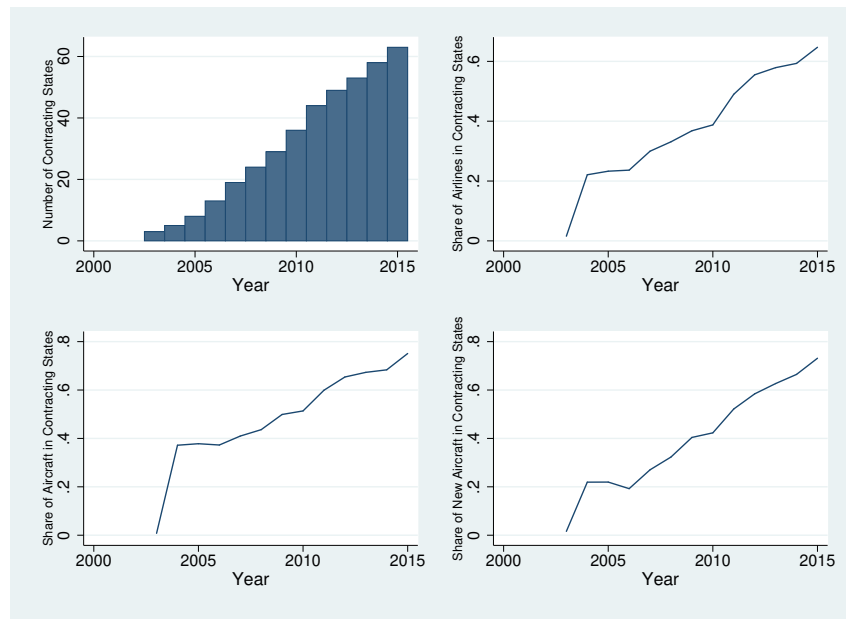
- Djankov, Simeon, Caralee McLiesh, and Andrei Shleifer, 2007, Private credit in 129 countries, *Journal of Financial Economics* 84, 299–329.
- Fisman, Raymond, and Inessa Love, 2004, Financial Development and Intersectoral Allocation: A New Approach, *The Journal of Finance* 59, 2785–2807.
- Foster, Lucia, John Haltiwanger, and Chad Syverson, 2008, Reallocation, Firm Turnover, and Efficiency: Selection on Productivity or Profitability?, *American Economic Review* 98, 394–425.
- Gale, Douglas, and Martin Hellwig, 1985, Incentive-Compatible Debt Contracts: The One-Period Problem, *The Review of Economic Studies* 52, 647–663.
- Gavazza, Alessandro, 2011a, Leasing and Secondary Markets: Theory and Evidence from Commercial Aircraft, *Journal of Political Economy* 119, 325–377.
- , 2011b, The Role of Trading Frictions in Real Asset Markets, *American Economic Review* 101, 1106–1143.
- Gray, Donald, Jason MacIntyre, and Jeffrey Wool, 2015, The interaction between Cape Town Convention repossession remedies and local procedural law: a civil law case study, *Cape Town Convention Journal* 4, 17–52.
- Harris, Milton, and Artur Raviv, 1990, Capital Structure and the Informational Role of Debt, *The Journal of Finance* 45, 321–349.
- Hart, Oliver, and John Moore, 1995, Debt and Seniority: An Analysis of the Role of Hard Claims in Constraining Management, *American Economic Review* 85, 567–585.
- Haselmann, Rainer, Katharina Pistor, and Vikrant Vig, 2010, How Law Affects Lending, *The Review of Financial Studies* 23, 549–580.
- Haselmann, Rainer, David Schoenherr, and Vikrant Vig, 2018, Rent Seeking in Elite Networks, *Journal of Political Economy* 126, 1638–1690.
- Hsieh, Chang-Tai, and Peter J. Klenow, 2009, Misallocation and Manufacturing TFP in China and India, *The Quarterly Journal of Economics* 124, 1403–1448.
- Jensen, Michael C., 1993, The Modern Industrial Revolution, Exit, and the Failure of Internal Control Systems, *The Journal of Finance* 48, 831–880.
- Karpoff, Jonathan M., and Michael D. Wittry, 2018, Institutional and Legal Context in Natural Experiments: The Case of State Antitakeover Laws, *The Journal of Finance* 73, 657–714.
- Khwaja, Asim Ijaz, and Atif Mian, 2005, Do Lenders Favor Politically Connected Firms? Rent Provision in an Emerging Financial Market, *The Quarterly Journal of Economics* 120, 1371–1411.

- Kroszner, Randall S., and Philip E. Strahan, 1999, What Drives Deregulation? Economics and Politics of the Relaxation of Bank Branching Restrictions, *The Quarterly Journal of Economics* 114, 1437–1467.
- La Porta, Rafael, Florencio Lopez-De-Silanes, and Andrei Shleifer, 2002, Government Ownership of Banks, *The Journal of Finance* 57, 265–301.
- La Porta, Rafael, Florencio Lopez-de Silanes, and Andrei Shleifer, 2008, The Economic Consequences of Legal Origins, *Journal of Economic Literature* 46, 285–332.
- La Porta, Rafael, Florencio Lopez-De-Silanes, Andrei Shleifer, and Robert W. Vishny, 1998, Law and Finance, *Journal of Political Economy* 106, 1113–1155.
- La Porta, Rafael, Florencio Lopez-De-Silanes, Andrei Shleifer, and Robert W. Vishny, 1997, Legal Determinants of External Finance, *The Journal of Finance* 52, 1131–1150.
- Larrain, Mauricio, and Sebastian Stumpner, 2017, Capital Account Liberalization and Aggregate Productivity: The Role of Firm Capital Allocation, *The Journal of Finance* 72, 1825–1858.
- Levine, Ross, 1998, The Legal Environment, Banks, and Long-Run Economic Growth, *Journal of Money, Credit and Banking* 30, 596–613.
- , 1999, Law, Finance, and Economic Growth, *Journal of Financial Intermediation* 8, 8–35.
- , Norman Loayza, and Thorsten Beck, 2000, Financial intermediation and growth: Causality and causes, *Journal of Monetary Economics* 46, 31–77.
- Lilienfeld-Toal, Ulf von, Dilip Mookherjee, and Sujata Visaria, 2012, The Distributive Impact of Reforms in Credit Enforcement: Evidence From Indian Debt Recovery Tribunals, *Econometrica* 80, 497–558.
- Linetsky, Vadim, 2009, Economic Benefits of the Cape Town Treaty, *Aviation Working Group, Cape Town Convention Academic Project*.
- Matsa, David A., 2011, Competition and Product Quality in the Supermarket Industry, *The Quarterly Journal of Economics* 126, 1539–1591.
- Midrigan, Virgiliu, and Daniel Yi Xu, 2014, Finance and Misallocation: Evidence from Plant-Level Data, *American Economic Review* 104, 422–458.
- Olivares, Marcelo, and Gérard P. Cachon, 2009, Competing Retailers and Inventory: An Empirical Investigation of General Motors’ Dealerships in Isolated U.S. Markets, *Management Science* 55, 1586–1604.
- Olley, G. Steven, and Ariel Pakes, 1996, The Dynamics of Productivity in the Telecommunications Equipment Industry, *Econometrica* 64, 1263–1297.

- Pavcnik, Nina, 2002, Trade Liberalization, Exit, and Productivity Improvements: Evidence from Chilean Plants, *The Review of Economic Studies* 69, 245–276.
- Ponticelli, Jacopo, and Leonardo S. Alencar, 2016, Court Enforcement, Bank Loans, and Firm Investment: Evidence from a Bankruptcy Reform in Brazil, *The Quarterly Journal of Economics* 131, 1365–1413.
- Restuccia, Diego, and Richard Rogerson, 2008, Policy distortions and aggregate productivity with heterogeneous establishments, *Review of Economic Dynamics* 11, 707–720.
- Ripple, Gregory P, 2002, Special Protection in the Air [line Industry]: The Historical Development of Section 1110 of the Bankruptcy Code, *Notre Dame L. Rev.* 78, 281.
- Sapienza, Paola, 2004, The effects of government ownership on bank lending, *Journal of Financial Economics* 72, 357–384.
- Sengupta, Rajdeep, 2007, Foreign entry and bank competition, *Journal of Financial Economics* 84, 502–528.
- Syverson, Chad, 2011, What Determines Productivity?, *Journal of Economic Literature* 49, 326–365.
- Varela, Liliana, 2018, Reallocation, Competition, and Productivity: Evidence from a Financial Liberalization Episode, *The Review of Economic Studies* 85, 1279–1313.
- Vig, Vikrant, 2013, Access to Collateral and Corporate Debt Structure: Evidence from a Natural Experiment, *The Journal of Finance* 68, 881–928.
- Wool, Jeffrey, 2014, Compliance with Transnational Commercial Law Treaties—A Framework as Applied to the Cape Town Convention, *Cape Town Convention Journal* 3, 5–31.
- Wurgler, Jeffrey, 2000, Financial markets and the allocation of capital, *Journal of Financial Economics* 58, 187–214.



(a) Status Map of the Cape Town Convention



(b) Coverage of the Cape Town Convention

Figure 1: Status and Coverage of the Cape Town Convention

Figure 1a is the status map of the Cape Town Convention at the end of 2015. Blue shaded areas indicate the countries in which the Convention is ratified and has taken effect. The darkness of the blue areas corresponds to the number of years since ratification. The gray shaded areas indicate the countries in which the Convention is signed but not ratified. The remaining white areas indicate countries in which the Convention is neither signed nor ratified. Figure 1b shows the coverage of the Convention overtime. The four variables on the y axis are (left to right, top to bottom): number of countries that have ratified the Convention, number of airlines in countries that have ratified the Convention, number of aircraft in countries that have ratified the Convention, number of newly acquired aircraft in countries that have ratified the Convention.

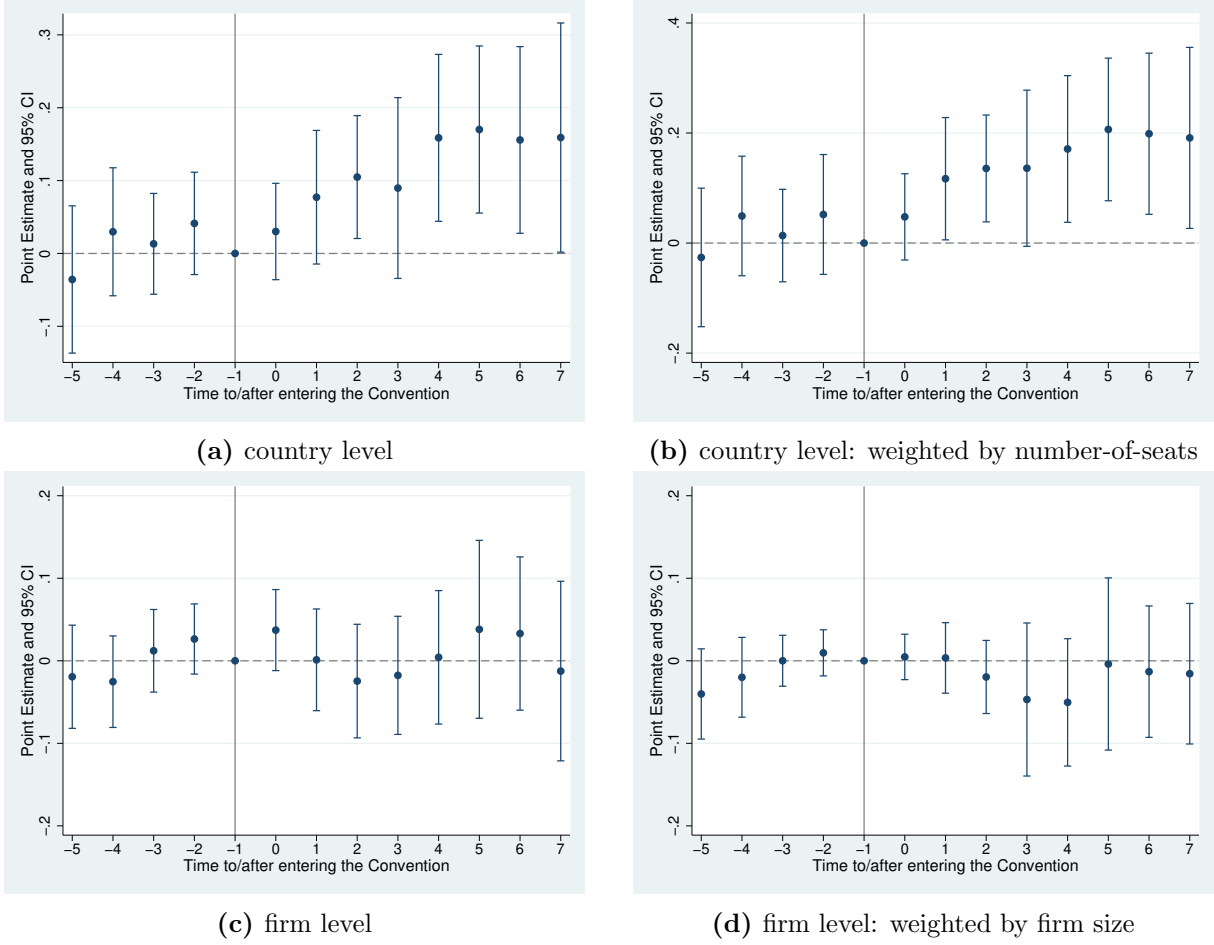


Figure 2: Dynamic Effect of the Convention on Productivity

Figure 2 illustrates the dynamic effect of the Convention on average country-level and firm-level productivity in the years around the ratification of the Convention. Figure 2a and Figure 2b estimate the following specification:

$$Y_{j,t} = \gamma_j + \alpha_{k,t} + \sum_{l=-7, l \neq -1}^{l=7} \beta_l CTC_{j,l} + \theta' X_{j,t} + \varepsilon_{j,t}$$

while Figure 2c and Figure 2d estimate:

$$Y_{i,t} = \gamma_i + \alpha_{k,t} + \sum_{l=-7, l \neq -1}^{l=7} \beta_l CTC_{j,l} + \theta' X_{j,t} + \varepsilon_{j,t}$$

where i indexes firm, j indexes country, k indexes region, t indexes time, $X_{j,t}$ includes country-level controls and $CTC_{j,l}$ is a dummy variable indicating the relative year around the ratification of the Convention. Year minus one is the year before the ratification, and is the omitted category. In Figure 2a, the unit of observation is at the country-year level and the dependent variable is log of monthly flying hours averaged over a year across the entire fleet of each country. In Figure 2b, the unit of observation is also at country-year level and the dependent variable is log of aircraft-size-weighted (number-of-seats-weighted) flying hours. The dependent variable in Figure 2c and Figure 2d is log of firm-level flying hours. Regression in Figure 2d is further weighted by lagged firm size. Standard errors are clustered at the country-level.

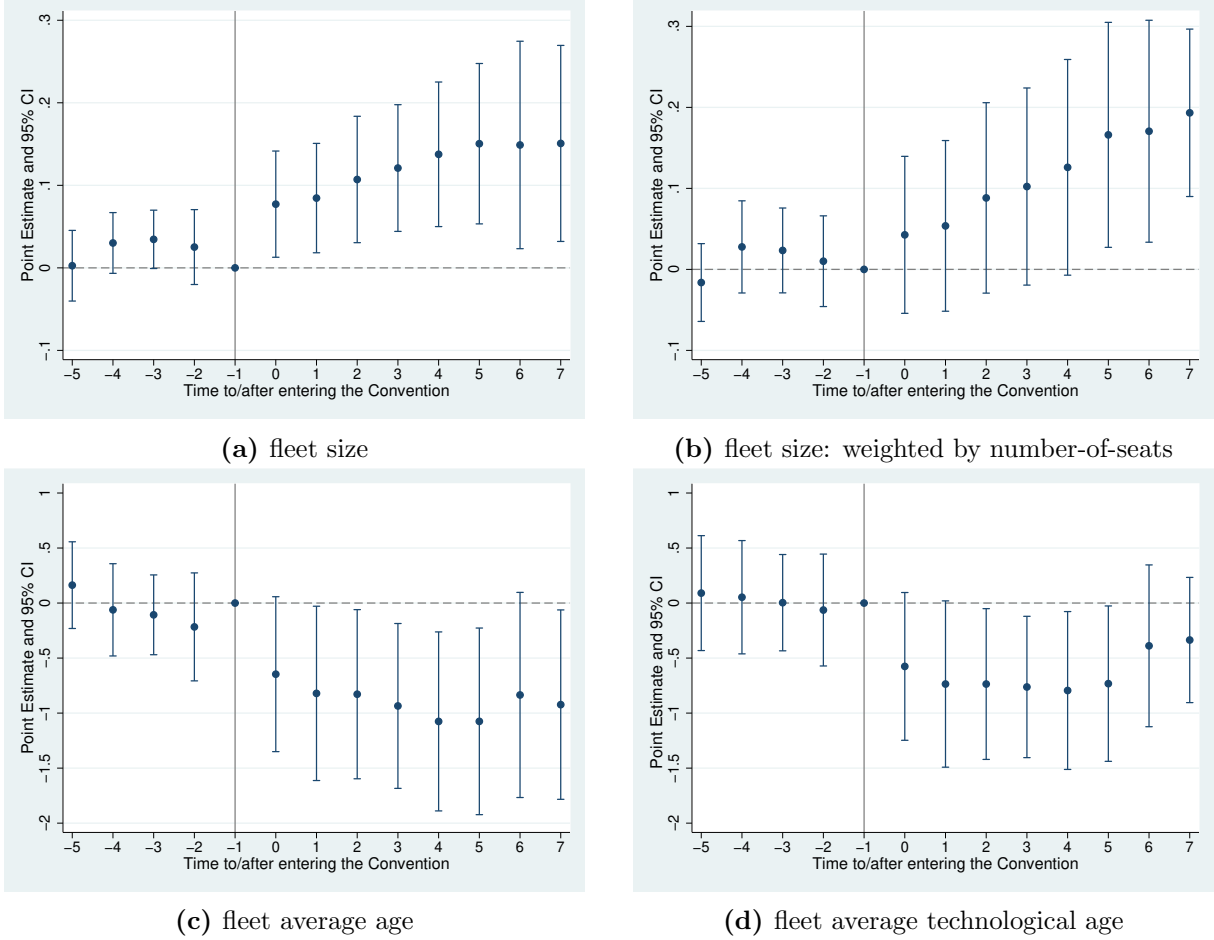
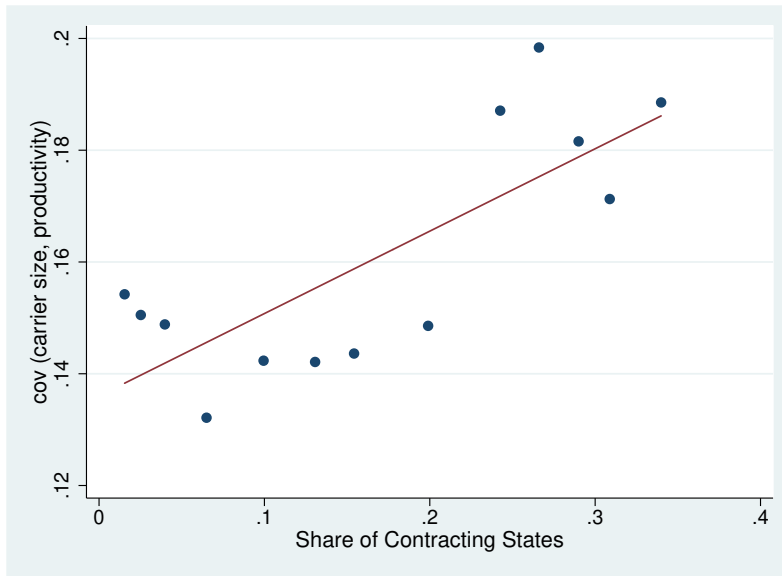


Figure 3: Dynamic Effect of the Convention on Reallocation

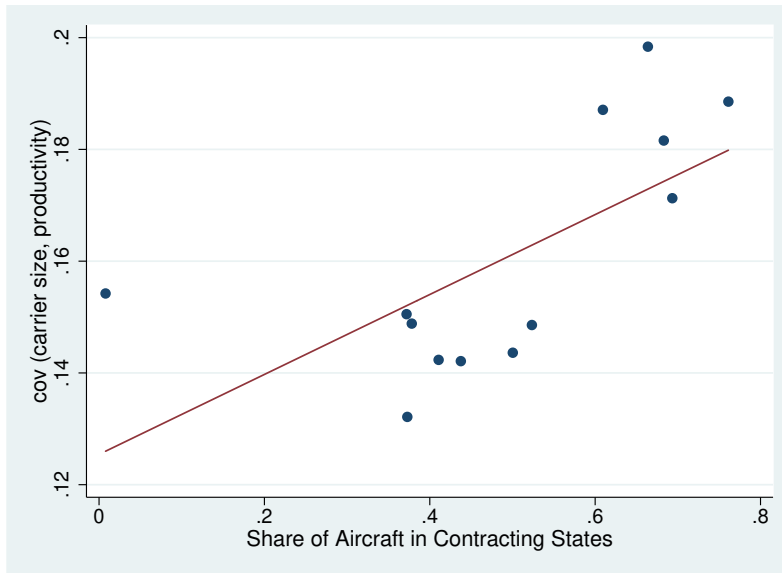
Figure 3 illustrates the dynamic effect of the Convention on the degree of reallocation in the years around the ratification of the Convention. The figures estimate the following specification:

$$Y_{i,t} = \gamma_i + \alpha_{k,t} + \sum_{l=-7, l \neq -1}^{l=7} \beta_l CTC_{j,l} \times S_{i,t-1} + \sum_{l=-7, l \neq -1}^{l=7} \mu_l CTC_{j,l} + \delta S_{i,t-1} + \theta' \mathbf{X}_{j,t} + \varepsilon_{i,t}$$

where i indexes firm, j indexes country, k indexes region, t indexes time, $\mathbf{X}_{j,t}$ includes country-level controls and $CTC_{j,l}$ is a dummy variable indicating the relative year around the ratification of the Convention. Year minus one is the year before the ratification, and is the omitted category. Pre-convention firm-level productivity is denoted as $S_{i,t-1}$ and is measured by log of average monthly flying hours. The unit of observation is at firm-year level and the dependent variable is firm fleet size in Figure 3a, aircraft-size-weighted (number-of-seats-weighted) fleet size in Figure 3b, fleet average age in Figure 3c and fleet average technological age in Figure 3d. Standard errors are clustered at the country-level.



(a) OP Covariance and Share of Contracting States



(b) OP Covariance and Share of Aircraft in Contracting States

Figure 4: Olley-Pakes Covariance Term between Carrier Size and Productivity

This figure shows how the Olley-Pakes covariance term between carrier size and productivity changes with more countries entering the Convention. Carrier size is proxied by share of aircraft in the global airline industry and productivity is proxied by monthly flying hours. The covariance term is shown on the y-axis. Share of Contracting States in all states is on the x-axis in Figure 4a. Share of aircraft operated by Contracting States is on the x-axis in Figure 4b.

Table 1: Hazard Model – Determinants of Entry Decisions into the Convention

Dep. Var.	Log expected time to entry						
	(1)	(2)	(3)	(4)	(5)	(6)	(7)
<i>HHI</i>	0.309*** (0.075)	0.267*** (0.080)	0.208** (0.090)	0.198** (0.091)	0.188** (0.092)	0.183** (0.087)	0.269** (0.108)
<i>cov(size, prod)</i>	-0.121** (0.055)	-0.116** (0.053)	-0.124** (0.057)	-0.107* (0.057)	-0.122** (0.058)	-0.104* (0.054)	-0.130* (0.068)
ln(GDP per capita)		0.08 (0.067)	0.068 (0.066)	0.093 (0.076)	0.066 (0.067)	0.025 (0.066)	0.254** (0.117)
GDP per capita growth		-0.005 (0.017)	-0.009 (0.017)	-0.022* (0.011)	-0.01 (0.017)	-0.008 (0.017)	-0.013 (0.024)
Inflation		-0.004 (0.004)	-0.004 (0.004)	-0.005 (0.003)	-0.003 (0.004)	-0.004 (0.004)	-0.005 (0.004)
Export to GDP		-0.007 (0.005)	-0.006 (0.005)	-0.006 (0.006)	-0.006 (0.005)	-0.005 (0.005)	-0.008 (0.006)
Import to GDP		0.004 (0.005)	0.002 (0.005)	0.004 (0.006)	0.003 (0.005)	0.001 (0.005)	0.004 (0.006)
Gov Expenditure		-0.011 (0.016)	-0.02 (0.015)	-0.016 (0.013)	-0.017 (0.015)	-0.017 (0.014)	-0.017 (0.021)
ln(population)			-0.089* (0.050)	-0.071 (0.049)	-0.103* (0.055)	-0.085 (0.056)	0.06 (0.118)
Population growth			-0.109*** (0.033)	-0.117*** (0.035)	-0.099*** (0.034)	-0.083** (0.033)	-0.114*** (0.044)
Private Credit to GDP				-0.002 (0.002)			
France law					0.05 (0.149)		
German law					0.444 (0.300)		
Scandinavian law					-0.155 (0.257)		
Democratic Index						0.01 (0.022)	
ln(Air Psgr)							-0.16 (0.112)
Air Psgr growth							0.002 (0.003)
Region FE	YES	YES	YES	YES	YES	YES	YES
Log likelihood	-107.45	-94.785	-90.095	-86.262	-87.981	-83.904	-75.192
p-value of chi2 for regression	< 0.001	< 0.001	< 0.001	< 0.001	< 0.001	< 0.001	< 0.001
No. of Countries	197	172	172	168	172	153	151
Obs	1,979	1,672	1,671	1,604	1,671	1,445	1,381

The table shows the results from a hazard model to study the timing of entry into the Convention. The hazard model is Weibull with log expected time to ratify the Convention as the dependent variable. The hazard function is inverted and mapped into the time domain, as suggested by [Kroszner and Strahan \(1999\)](#). The coefficients represent the percentage change in the time to ratify for a one-unit change in the independent variables. HHI is the Hirfindahl-Hirschman index, which measures the aviation market concentration for each country. *cov(size, prod)* measures the Olley-Pakes covariance term between carrier size and carrier productivity, as a proxy for market distortion. Both HHI and *cov(size, prod)* are measured at the country-year level and standardized to facilitate interpretation. Robust standard errors clustered at country-level are denoted in parentheses. * indicates statistical significance at the 10% level, ** at the 5% level, and *** at the 1% level.

Table 2: Returns around the Convention’s Ratification

Panel A: 3-day abnormal return before and around the ratification			
	[-4,-2]	[-1, 1]	Difference
Mean	0.000 (0.006)	0.023 (0.006)	0.023***
Obs	153	153	

Panel B: 3-day abnormal return around the ratification			
	Delist/Dead, [-1, 1]	Healthy, [-1, 1]	Difference
Mean	-0.003 (0.015)	0.027 (0.007)	0.029*
Obs	21	132	

Abnormal returns are computed as cumulative residuals of the market model over the three-day period starting one day before the announcement of the Convention’s ratification. The market model is estimated over the 200-day period starting 205 days before the announcement of the ratification, where the relevant country’s market index is employed as the market proxy. All listed airlines with available information are included. Panel A compares the 3-day abnormal return before the ratification versus around the ratification. Panel B compares the 3-day return around the ratification for delisted or dead airlines (less than 5 years from delisting or death) versus relatively healthier airlines.

Table 3: Summary Statistics

Panel A: Aircraft Level						
	N	Mean	P1	P50	P99	SD
Age	429,033	11.29	0.00	10.00	35.00	8.52
Tech Age	429,033	20.51	4.00	19.00	44.00	9.41
Age at Death	17,025	25.90	9.00	25.00	46.00	8.26
Average monthly flying hours	429,033	210.42	0.00	212.08	441.33	99.58
Total Number of Aircraft: 51,665						

Panel B: Airline Level						
	N	Mean	P1	P50	P99	SD
Fleet Size	28,608	19.78	1.00	6.00	263.00	54.49
Age	28,608	15.53	1.00	14.50	38.00	9.01
Tech Age	28,608	24.40	6.54	24.00	46.00	9.18
Average monthly flying hours	28,608	127.87	0.00	116.50	366.00	96.49
Number of Asset Types	28,608	2.39	1.00	2.00	9.00	1.83
Total Number of Airlines: 8,175						

Panel C: Country Level						
	N	Mean	P1	P50	P99	SD
Number of Airlines	5,378	11.64	1.00	4.00	151.00	35.51
Fleet Size	5,378	125.38	1.00	24.00	1347.00	573.91
Age	5,378	14.50	3.50	13.21	31.33	6.48
Tech Age	5,378	24.44	11.22	23.60	41.00	6.94
Average monthly flying hours	5,378	159.03	0.00	163.09	332.30	77.43
Total Number of Countries: 218						

The table presents the summary statistics for variables listed in the first column. Panels A, B, and C show statistics at the aircraft, carrier and country levels, respectively. The definitions of the variables are listed in Appendix A.

Table 4: Impact of the Convention on Average Productivity
Aggregate Country-level

Dep. Var.	(1)	(2)	(3)	(4)	(5)	(6)	(7)
	ln(average monthly flying hours)						
<i>CTC</i>	0.117** (0.049)	0.132*** (0.048)	0.154*** (0.052)	0.154*** (0.052)	0.134*** (0.049)	0.138*** (0.052)	0.123** (0.053)
ln(GDP per capita)	0.268*** (0.074)	0.272** (0.107)	0.261** (0.114)	0.259** (0.112)	0.271** (0.107)	0.292** (0.117)	0.233 (0.173)
GDP per capita growth	-0.003* (0.002)	-0.002 (0.002)	-0.002 (0.002)	-0.002 (0.002)	-0.002 (0.002)	-0.003 (0.002)	-0.006** (0.003)
ln(Pop)	0.098 (0.163)	0.122 (0.209)	-0.068 (0.225)	-0.065 (0.227)	0.126 (0.209)	0.012 (0.240)	0.182 (0.317)
Pop growth	-0.025** (0.011)	-0.017 (0.014)	-0.02 (0.015)	-0.02 (0.015)	-0.017 (0.014)	-0.018 (0.016)	-0.020** (0.009)
Pop density	-0.000 (0.000)	-0.000 (0.000)	0.000 (0.000)	0.000 (0.000)	-0.000 (0.000)	-0.000 (0.000)	-0.000 (0.000)
Export to GDP		0.003 (0.002)	0.003 (0.002)	0.003 (0.002)	0.003 (0.002)	-0.000 (0.002)	0.003 (0.003)
Import to GDP		0.000 (0.002)	0.000 (0.002)	0.000 (0.002)	0.000 (0.002)	0.002 (0.002)	0.001 (0.003)
Investment to GDP		-0.002 (0.002)	-0.002 (0.002)	-0.002 (0.002)	-0.002 (0.002)	-0.002 (0.002)	0.003 (0.004)
Inflation		-0.001 (0.000)	-0.000 (0.000)	-0.000 (0.000)	-0.001* (0.000)	-0.001 (0.000)	-0.001 (0.001)
Air Liberalization Index			0.002 (0.007)			0.004 (0.007)	0.005 (0.009)
Number of ASA countries				0.001 (0.002)			
Open Skies with US					-0.015 (0.036)		
Democratic Index						0.006 (0.009)	0.002 (0.010)
Private Credit to GDP							-0.000 (0.001)
Economic Freedom Index							-0.028 (0.034)
Property Rights							0.001 (0.002)
Corruption							0.002 (0.004)
Country FE	YES	YES	YES	YES	YES	YES	YES
Region × Year FE	YES	YES	YES	YES	YES	YES	YES
No. of Countries	177	165	160	160	163	143	126
Obs	4,216	3,847	3,338	3,338	3,777	3,041	1,666
Adj R2	0.656	0.658	0.676	0.676	0.66	0.674	0.738

The table shows how the Convention affects average industry-wide productivity at country level. The unit of observation is country-year. The coefficients are obtained by estimating the following specification:

$$Y_{j,t} = \gamma_j + \alpha_{k,t} + \beta CTC_{j,t} + \theta' X_{j,t} + \varepsilon_{j,t}$$

where j indexes country, t indexes time and k indexes region. Country and region by year fixed effects are captured by γ_j and $\alpha_{k,t}$, respectively. The Convention status is denoted by $CTC_{j,t}$, which equals one once country j introduces the Convention and zero otherwise. The dependent variable is \ln (average monthly flying hours). The sample includes all countries with available information from 1980 to 2015 in all columns. Robust standard errors clustered at country-level are denoted in parentheses. * indicates statistical significance at the 10% level, ** at the 5% level, and *** at the 1% level.

Table 5: Impact of the Convention on Average Productivity
Individual Firm-level

Dep. Var.	(1)	(2)	(3)	(4)	(5)	(6)	(7)
	ln(average monthly flying hours)						
<i>CTC</i>	-0.008 (0.033)	0.006 (0.030)	-0.015 (0.040)	-0.019 (0.040)	0.008 (0.037)	-0.017 (0.040)	-0.028 (0.042)
ln(GDP per capita)	0.221*** (0.081)	0.164* (0.094)	0.220* (0.112)	0.220** (0.109)	0.163* (0.095)	0.215* (0.109)	0.250** (0.124)
GDP per capita growth	0.003 (0.002)	0.005** (0.002)	0.004* (0.002)	0.004* (0.002)	0.005** (0.002)	0.003 (0.002)	0.001 (0.003)
ln(Pop)	0.097 (0.169)	0.001 (0.195)	-0.047 (0.197)	-0.035 (0.196)	-0.002 (0.198)	-0.151 (0.203)	0.11 (0.229)
Pop growth	-0.038** (0.016)	-0.019 (0.016)	-0.018 (0.016)	-0.018 (0.016)	-0.02 (0.016)	-0.025 (0.016)	-0.015 (0.017)
Pop density	0.001 (0.000)	0.001* (0.000)	0.001 (0.000)	0.001 (0.000)	0.001* (0.000)	0.001 (0.000)	0.001 (0.001)
Export to GDP		0.002 (0.002)	0.001 (0.002)	0.001 (0.002)	0.003 (0.002)	-0.001 (0.002)	0.001 (0.002)
Import to GDP		0.003 (0.003)	0.004 (0.003)	0.003 (0.003)	0.003 (0.003)	0.006** (0.003)	0.002 (0.003)
Investment to GDP		0.000 (0.003)	-0.001 (0.003)	-0.001 (0.003)	0.000 (0.003)	-0.001 (0.003)	-0.001 (0.003)
Inflation		-0.000 (0.000)	0.000 (0.000)	0.000 (0.000)	-0.000 (0.000)	0.000 (0.000)	-0.000 (0.000)
Air Liberalization Index			0.000 (0.003)			0.000 (0.003)	0.001 (0.004)
Number of ASA countries				0.001 (0.001)			
Open Skies with US					0.011 (0.030)		
Democratic Index						0.002 (0.009)	-0.000 (0.008)
Private Credit to GDP							-0.000 (0.001)
Economic Freedom Index							-0.01 (0.036)
Property Rights							-0.002 (0.001)
Corruption							-0.001 (0.003)
Airline FE	YES	YES	YES	YES	YES	YES	YES
Region × Year FE	YES	YES	YES	YES	YES	YES	YES
No. of Countries	169	157	153	153	156	138	124
Obs	19,972	19,315	17,066	17,066	15,507	16,549	10,951
Adj R2	0.736	0.745	0.758	0.758	0.729	0.761	0.738

The table shows how the Convention affects average productivity at firm level. The unit of observation is firm-year. The coefficients are obtained by estimating the following specification:

$$Y_{i,t} = \gamma_i + \alpha_{k,t} + \beta CTC_{j,t} + \theta' X_{j,t} + \varepsilon_{j,t}$$

where i indexes firm, j indexes country, t indexes time and k indexes region. Firm and region by year fixed effects are captured by γ_i and $\alpha_{k,t}$, respectively. The Convention status is denoted by $CTC_{j,t}$, which equals one once country j introduces the Convention and zero otherwise. The dependent variable is $\ln(\text{average monthly flying hours})$. The sample includes all airlines with available information from 1980 to 2015 in all columns. Robust standard errors clustered at country-level are denoted in parentheses. * indicates statistical significance at the 10% level, ** at the 5% level, and *** at the 1% level.

Table 6: Impact of the Convention on Reallocation

Dep. Var.	(1)	(2)	(3)	(4)	(5)	(6)
	ln(# of aircraft)	Age	Tech Age	ln(# of aircraft)	Age	Tech Age
<i>CTC</i> × <i>Productivity</i>	0.128*** (0.043)	-0.902** (0.389)	-0.649* (0.337)	0.097*** (0.035)	-1.191*** (0.289)	-0.909*** (0.253)
<i>CTC</i>	-0.552*** (0.205)	3.433* (1.961)	2.230 (1.775)			
<i>Productivity</i>	0.066*** (0.013)	-1.004*** (0.118)	-1.053*** (0.106)	0.070*** (0.014)	-0.830*** (0.159)	-0.801*** (0.111)
Macro Controls	YES	YES	YES	Absorbed	Absorbed	Absorbed
Airline FE	YES	YES	YES	YES	YES	YES
Region × Year FE	YES	YES	YES	Absorbed	Absorbed	Absorbed
Country × Year FE	NO	NO	NO	YES	YES	YES
No. of Countries	174	174	174	138	138	138
Obs	22,060	22,060	22,060	21,414	21,414	21,414
Adj R2	0.891	0.83	0.823	0.896	0.849	0.842

The table shows how reallocation across firms contributes to the gain in aggregate productivity. The unit of observation is firm-year. The coefficients in columns (4) to (6) are obtained by estimating the following specification:

$$Y_{i,t} = \gamma_i + \alpha_{j,t} + \beta CTC_{j,t} \times S_{i,t-1} + \delta S_{i,t-1} + \varepsilon_{i,t}$$

where i indexes firm, j indexes country and t indexes time. Firm and country by year fixed effects are captured by γ_i and $\alpha_{j,t}$, respectively. The Convention status is denoted by $CTC_{j,t}$, which equals one once country j introduces the Convention and zero otherwise. The interaction term $CTC_{j,t} \times S_{i,t-1}$ contains a pre-determined firm-level characteristic, $S_{i,t-1}$, to capture the differential effect of the Convention on the real outcomes. In this table, $S_{i,t-1}$ is the pre-convention firm-level productivity or $\ln(\text{average monthly flying hours})$. The regression equation in columns (1) to (3) is similarly defined. The dependent variable in columns (1) and (4) is fleet size or $\ln(\text{number of aircraft})$ in the respective firm-year. In columns (2) and (5), the dependent variable is average age of the respective airline's fleet. In columns (3) and (6), the dependent variable is average tech age of the respective airline's fleet. Tech age measures aircraft technological age, defined as the number of years since the introduction of the underlying aircraft's type, similar to [Benmelech and Bergman \(2011\)](#). Macro control variables include $\ln(\text{GDP per capita})$, GDP per capita growth, $\ln(\text{population})$, population growth and population density. The sample includes all airlines with available information from 1980 to 2015. Robust standard errors clustered at country-level are denoted in parentheses. * indicates statistical significance at the 10% level, ** at the 5% level, and *** at the 1% level.

Table 7: Impact of the Convention on Reallocation
Probability of Substantial Downsizing and Exit

Dep. Var.	(1)	(2)	(3)	(4)
	Downsizing	Exit	Downsizing	Exit
<i>CTC</i> × <i>Productivity</i>	-0.026*** (0.006)	-0.016*** (0.006)	-0.025*** (0.009)	-0.015** (0.007)
<i>CTC</i>	0.134*** (0.030)	0.077*** (0.029)		
<i>Productivity</i>	-0.019*** (0.005)	-0.012*** (0.004)	-0.010* (0.006)	-0.010** (0.005)
Macro Controls	YES	YES	Absorbed	Absorbed
Airline FE	YES	YES	YES	YES
Region × Year FE	YES	YES	Absorbed	Absorbed
Country × Year FE	NO	NO	YES	YES
No. of Countries	174	174	138	138
Obs	22,060	22,060	21,414	21,414
Adj R2	0.161	0.135	0.158	0.101

The table shows how reallocation across firms contributes to the gain in aggregate productivity, focusing on the probability of substantial downsizing and exit. The unit of observation is firm-year. The coefficients in columns (3) and (4) are obtained by estimating the following specification:

$$Y_{i,t} = \gamma_i + \alpha_{j,t} + \beta CTC_{j,t} \times S_{i,t-1} + \delta S_{i,t-1} + \varepsilon_{i,t}$$

where i indexes firm, j indexes country and t indexes time. Firm and country by year fixed effects are captured by γ_i and $\alpha_{j,t}$, respectively. The Convention status is denoted by $CTC_{j,t}$, which equals one once country j introduces the Convention and zero otherwise. The interaction term $CTC_{j,t} \times S_{i,t-1}$ contains a pre-determined firm-level characteristic, $S_{i,t-1}$, to capture the differential effect of the Convention on the real outcomes. In this table, $S_{i,t-1}$ is the pre-convention firm-level productivity or $\ln(\text{average monthly flying hours})$. The regression equation in columns (1) and (2) is similarly defined. The dependent variable in columns (1) and (3) is a binary variable which equals one if fleet size decreases by more than 50% in the respective firm-year. In columns (2) and (4), the dependent variable is a binary variable which equals one if the firm exits in the following year. The sample includes all airlines with available information from 1980 to 2015. Macro control variables include $\ln(\text{GDP per capita})$, $\text{GDP per capita growth}$, $\ln(\text{population})$, population growth and $\text{population density}$. Robust standard errors clustered at country-level are denoted in parentheses. * indicates statistical significance at the 10% level, ** at the 5% level, and *** at the 1% level.

Table 8: Cross-sectional Heterogeneity
Weak vs. Strong Pre-convention Creditor Protection

Dep. Var.	(1)	(2)	(3)	(4)	(5)	(6)
	ln(average monthly flying hours)		ln(# of aircraft)			
<i>CTC</i> × <i>Productivity</i>			0.196*** (0.066)	0.081** (0.032)	0.182** (0.071)	0.067*** (0.022)
<i>CTC</i>	0.186*** (0.066)	0.054 (0.077)	-0.910*** (0.319)	-0.342** (0.165)		
<i>Productivity</i>			0.059*** (0.017)	0.078*** (0.016)	0.064*** (0.020)	0.076*** (0.018)
Sample	Weak	Strong	Weak	Strong	Weak	Strong
Macro Controls	YES	YES	YES	YES	Absorbed	Absorbed
Airline FE	-	-	YES	YES	YES	YES
Country FE	YES	YES	Absorbed	Absorbed	Absorbed	Absorbed
Region × Year FE	YES	YES	YES	YES	Absorbed	Absorbed
Country × Year FE	NO	NO	NO	NO	YES	YES
No. of Countries	91	39	87	38	72	32
Obs	2,490	1,174	10,710	9,926	10,100	9,764
Adj R2	0.635	0.643	0.871	0.908	0.882	0.908

The table shows how the increase in aggregate productivity and the across-firm reallocation differ in countries with weak pre-convention creditor protection compared to countries with strong pre-convention creditor protection. Creditor protection information is from [Djankov, McLiesh, and Shleifer \(2007\)](#). Subgroup “Weak” (“Strong”) includes countries for which the creditor rights aggregate score is below or equal to (above) 2. The unit of observation is country-year in columns (1) and (2). The regression equation in columns (1) and (2) is the same as in Table 4. The unit of observation is firm-year in columns (3) to (6). The coefficients in columns (3) to (6) are obtained by estimating the following specification:

$$Y_{i,t} = \gamma_i + \alpha_{j,t} + \beta CTC_{j,t} \times S_{i,t-1} + \delta S_{i,t-1} + \varepsilon_{i,t}$$

where i indexes firm, j indexes country and t indexes time. Firm and country by year fixed effects are captured by γ_i and $\alpha_{j,t}$, respectively. The Convention status is denoted by $CTC_{j,t}$, which equals one once country j introduces the Convention and zero otherwise. The interaction term $CTC_{j,t} \times S_{i,t-1}$ contains a pre-determined firm-level characteristic, $S_{i,t-1}$, to capture the differential effect of the Convention on the real outcomes. In this table, $S_{i,t-1}$ is the pre-convention firm-level productivity or *ln(average monthly flying hours)*. The dependent variable in columns (1) and (2) is *ln(average monthly flying hours)* in the respective country-year. The dependent variable in columns (3) to (6) is fleet size or *ln(number of aircraft)* in the respective firm-year. In columns (1) and (2), the sample includes all *countries* with available information from 1980 to 2015. The sample includes all *airlines* with available information from 1980 to 2015 in columns (3) to (6). Robust standard errors clustered at country-level are denoted in parentheses. * indicates statistical significance at the 10% level, ** at the 5% level, and *** at the 1% level.

Table 9: Cross-sectional Heterogeneity
North America, Europe (less concentrated, less distorted) vs. Rest of the World

Dep. Var.	(1)	(2)	(3)	(4)	(5)	(6)
	ln(average monthly flying hours)		ln(# of aircraft)			
<i>CTC</i> × <i>Productivity</i>			0.222*** (0.046)	0.064*** (0.019)	0.208*** (0.057)	0.046*** (0.009)
<i>CTC</i>	0.123** (0.062)	0.02 (0.075)	-1.063*** (0.215)	-0.172* (0.087)		
<i>Productivity</i>			0.045*** (0.015)	0.085*** (0.016)	0.044** (0.017)	0.087*** (0.017)
Sample	Rest	Europe & NA	Rest	Europe & NA	Rest	Europe & NA
Macro Controls	YES	YES	YES	YES	Absorbed	Absorbed
Airline FE	-	-	YES	YES	YES	YES
Country FE	YES	YES	Absorbed	Absorbed	Absorbed	Absorbed
Region × Year FE	YES	YES	YES	YES	Absorbed	Absorbed
Country × Year FE	NO	NO	NO	NO	YES	YES
No. of Countries	131	46	128	46	95	43
Obs	3,025	1,191	9,965	12,095	9,292	12,122
Adj R2	0.673	0.586	0.88	0.898	0.892	0.900

The table shows how the increase in aggregate productivity and the across-firm reallocation differ in regions with less concentration and distortion (North America and Europe) compared with regions with more concentration and distortion (the rest of the world). The unit of observation is country-year in columns (1) and (2). The regression equation in columns (1) and (2) is the same as in Table 4. The unit of observation is firm-year in columns (3) to (6). The coefficients in columns (3) to (6) are obtained by estimating the following specification:

$$Y_{i,t} = \gamma_i + \alpha_{j,t} + \beta CTC_{j,t} \times S_{i,t-1} + \delta S_{i,t-1} + \varepsilon_{i,t}$$

where i indexes firm, j indexes country and t indexes time. Firm and country by year fixed effects are captured by γ_i and $\alpha_{j,t}$, respectively. The Convention status is denoted by $CTC_{j,t}$, which equals one once country j introduces the Convention and zero otherwise. The interaction term $CTC_{j,t} \times S_{i,t-1}$ contains a pre-determined firm-level characteristic, $S_{i,t-1}$, to capture the differential effect of the Convention on the real outcomes. In this table, $S_{i,t-1}$ is the pre-convention firm-level productivity or $\ln(\text{average monthly flying hours})$. The dependent variable in columns (1) and (2) is $\ln(\text{average monthly flying hours})$ in the respective country-year. The dependent variable in columns (3) to (6) is fleet size or $\ln(\text{number of aircraft})$ in the respective firm-year. In columns (1) and (2), the sample includes all *countries* with available information from 1980 to 2015. The sample includes all *airlines* with available information from 1980 to 2015 in columns (3) to (6). Robust standard errors clustered at country-level are denoted in parentheses. * indicates statistical significance at the 10% level, ** at the 5% level, and *** at the 1% level.

Table 10: What Leads to Across-Firm Reallocation?
Efficient Asset Redeployment

Dep. Var.	(1)	(2)	(3)	(4)	(5)	(6)
	ln(average monthly flying hours)					
<i>CTC</i> × <i>Transaction</i>	0.112*** (0.034)	0.116*** (0.034)	0.221*** (0.080)	0.234*** (0.078)	0.023 (0.045)	0.023 (0.046)
<i>CTC</i>	-0.009 (0.029)		-0.008 (0.029)		-0.009 (0.031)	
<i>Transaction</i>	-0.305*** (0.032)	-0.319*** (0.031)	-0.317*** (0.051)	-0.381*** (0.054)	-0.304*** (0.031)	-0.304*** (0.030)
Transactions	All	All	Failing	Failing	Normal	Normal
Macro Controls	YES	Absorbed	YES	Absorbed	YES	Absorbed
Age × Type FE	YES	YES	YES	YES	YES	YES
Country FE	YES	Absorbed	YES	Absorbed	YES	Absorbed
Region × Year FE	YES	Absorbed	YES	Absorbed	YES	Absorbed
Country × Year FE	NO	YES	NO	YES	NO	YES
No. of Countries	177	193	174	162	173	166
Obs	241,532	246,188	207,144	206,513	221,856	221,234
Adj R2	0.196	0.216	0.198	0.215	0.211	0.224

The table shows how asset reallocation becomes more efficient under the Convention. The unit of observation is aircraft-year. The coefficients in columns (2), (4) and (6) are obtained by estimating the following specification:

$$Y_{i,t} = \gamma_{age_type} + \alpha_{j,t} + \beta CTC_{j,t} \times Transaction_{i,t} + \delta Transaction_{i,t} + \varepsilon_{i,t}$$

where i indexes aircraft, j indexes country and t indexes time. Age by type and country by year fixed effects are captured by γ_{age_type} and $\alpha_{j,t}$, respectively. The regression equation in columns (1), (3) and (5) is similarly defined. The Convention status is denoted by $CTC_{j,t}$, which equals one once country j introduces the Convention and zero otherwise. The interaction term $CTC_{j,t} \times Transaction_{i,t}$ contains a binary variable $Transaction_{i,t}$, which equals one if the aircraft is around a transaction and zero otherwise. In columns (3) and (4), the indicator $Transaction_{i,t}$ equals one if the aircraft is around a transaction initiated by a failing airline and zero otherwise. In columns (5) and (6), $Transaction_{i,t}$ equals one if a transaction initiated by a healthy airline and zero otherwise. The dependent variable is $\ln(\text{average monthly flying hours})$ in the respective aircraft-year. The sample includes all *aircraft* with available information from 1980 to 2015 in columns (1) to (2). In columns (3) and (4), the sample excludes aircraft-year around normal transactions. In columns (5) and (6), the sample excludes aircraft-year around transactions initiated by distressed airlines. Robust standard errors clustered at country-level are denoted in parentheses. * indicates statistical significance at the 10% level, ** at the 5% level, and *** at the 1% level.

Table 11: What Leads to Across-Firm Reallocation?
Foreign Financiers and Financial Innovations

	(1)	(2)	(3)	(4)	(5)
Dep. Var.	ln (# of deals foreign)	ln(# of deals local)	share foreign	ln (# of foreign financiers)	ln(# of type)
<i>CTC</i>	0.210*** (0.072)	0.069 (0.045)	0.101*** (0.035)	0.310*** (0.106)	0.220*** (0.060)
Macro Controls	YES	YES	YES	YES	YES
Country FE	YES	YES	YES	YES	YES
Region × Year FE	YES	YES	YES	YES	YES
No. of Countries	141	141	141	141	141
Obs	2,359	2,359	2,359	2,359	2,359
Adj R2	0.665	0.502	0.452	0.649	0.718

The table shows how the Convention affects the activities of international financiers. The unit of observation is country-year. The coefficients are obtained by estimating the following specification:

$$Y_{j,t} = \gamma_j + \alpha_{k,t} + \beta CTC_{j,t} + \theta' X_{j,t} + \varepsilon_{j,t}$$

where j indexes country, t indexes time, and k indexes region. Country and region by year fixed effects are captured by γ_j and $\alpha_{k,t}$, respectively. The Convention status is denoted by $CTC_{j,t}$, which equals one once country j introduces the Convention and zero otherwise. Country level control variables are summarized by $X_{j,t}$ and include ln(GDP per capita), GDP per capita growth, ln(population), population growth and population density. The dependent variables in columns (1) to (5) are *ln (number of deals with foreign financiers)*, *ln (number of deals with local financiers)*, share of deals with foreign financiers, *ln (number of unique foreign financiers)* and *ln (number of unique financing types)*. The sample includes all countries with financing deals in which the arranger information is provided. Robust standard errors clustered at country-level are denoted in parentheses. * indicates statistical significance at the 10% level, ** at the 5% level, and *** at the 1% level.

Table 12: What Leads to Across-Firm Reallocation?
Credit Allocation

Dep. Var.	(1)	(2)	(3)	(4)
	<i>ln(# of deals)</i>		<i>ln(value of deals)</i>	
<i>CTC</i> × <i>Productivity</i>	0.049*** (0.018)	0.042** (0.017)	0.213*** (0.061)	0.190*** (0.059)
<i>CTC</i>	-0.210** (0.083)		-0.893*** (0.288)	
<i>Productivity</i>	-0.001 (0.002)	-0.002 (0.002)	-0.002 (0.011)	-0.003 (0.012)
Macro Controls	YES	Absorbed	YES	Absorbed
Airline FE	YES	YES	YES	YES
Region × Year FE	YES	Absorbed	YES	Absorbed
Country × Year FE	NO	YES	NO	YES
No. of Countries	167	135	167	135
Obs	13,237	12,801	13,237	12,801
Adj R2	0.418	0.415	0.409	0.403

The table shows how the Convention affects credit allocation across firms. The unit of observation is firm-year. The coefficients in columns (2) and (4) are obtained by estimating the following specification:

$$Y_{i,t} = \gamma_i + \alpha_{j,t} + \beta CTC_{j,t} \times S_{i,t-1} + \delta S_{i,t-1} + \varepsilon_{i,t}$$

where i indexes firm, j indexes country and t indexes time. Firm and country by year fixed effects are captured by γ_i and $\alpha_{j,t}$, respectively. The Convention status is denoted by $CTC_{j,t}$, which equals one once country j introduces the Convention and zero otherwise. The interaction term $CTC_{j,t} \times S_{i,t-1}$ contains a pre-determined firm-level characteristic, $S_{i,t-1}$, to capture the differential effect of the Convention on the real outcomes. In this table, $S_{i,t-1}$ is the pre-convention firm-level productivity or *ln(average monthly flying hours)*. The regression equation in columns (1) and (3) is similarly defined. The dependent variable in columns (1) and (2) is log number of completed financing deals in the respective firm-year. In columns (3) and (4), the dependent variable is log value of completed financing deals in the respective firm-year. Macro control variables include ln(GDP per capita), GDP per capita growth, ln(population), population growth and population density. Robust standard errors clustered at country-level are denoted in parentheses. * indicates statistical significance at the 10% level, ** at the 5% level, and *** at the 1% level.

Table 13: Impact of the Convention on Industry Dynamics

	(1)	(2)	(3)	(4)	(5)
Dep. Var.	# of carriers	# of carriers (mainline)	# of carriers (specialized)	average size (mainline)	average size (specialized)
<i>CTC</i>	3.733** (1.477)	-1.346** (0.640)	5.080*** (1.592)	0.235*** (0.088)	0.136** (0.068)
Macro Controls	YES	YES	YES	YES	YES
Country FE	YES	YES	YES	YES	YES
Region \times Year FE	YES	YES	YES	YES	YES
No. of Countries	182	182	182	161	177
Obs	5,162	5,162	5,162	4,248	4,349
Adj R2	0.981	0.819	0.978	0.823	0.664

The table shows how the Convention affects the number of carriers and types of business in the airline industry. The unit of observation is country-year. The coefficients are obtained by estimating the following specification:

$$Y_{j,t} = \gamma_j + \alpha_{k,t} + \beta CTC_{j,t} + \theta' X_{j,t} + \varepsilon_{j,t}$$

where j indexes country, t indexes time and k indexes region. Country and region by year fixed effects are captured by γ_j and $\alpha_{k,t}$, respectively. The Convention status is denoted by $CTC_{j,t}$, which equals one once country j introduces the Convention and zero otherwise. Country level control variables are summarized by $X_{j,t}$ and include $\ln(\text{GDP per capita})$, $\text{GDP per capita growth}$, $\ln(\text{population})$, population growth and $\text{population density}$. The dependent variable in column (1) is *number of carriers* in the respective country. In columns (2) and (3), the dependent variables are *number of mainline carriers* and *number of specialized carriers*. The dependent variables in columns (4) and (5) are average size of mainline carriers and specialized carriers. Mainline carriers are airlines that typically offer traditional and standard service between large airports while the specialized carriers mainly include low-cost, regional, leisure and cargo carriers. The sample includes all countries with available information from 1980 to 2015. Robust standard errors clustered at country-level are denoted in parentheses. * indicates statistical significance at the 10% level, ** at the 5% level, and *** at the 1% level.

Table 14: Impact of the Convention on Competition

Dep. Var.	(1)	(2)
	HHI	top share
<i>CTC</i> × <i>HHI_pre_entry</i>	-0.324*** (0.099)	-0.251*** (0.084)
<i>CTC</i>	0.117*** (0.036)	0.092** (0.036)
Macro Controls	YES	YES
Country FE	YES	YES
Region × Year FE	YES	YES
No. of Countries	171	171
Obs	4,025	4,025
Adj R2	0.809	0.795

The table shows how the Convention affects industry concentration. The unit of observation is country-year. The coefficients are obtained by estimating the following specification:

$$Y_{j,t} = \gamma_j + \alpha_{k,t} + \beta CTC_{j,t} \times HHI_pre_convention + \mu CTC_{j,t} + \theta' X_{j,t} + \varepsilon_{j,t}$$

where j indexes country, t indexes time and k indexes region. Country and region by year fixed effects are captured by γ_j and $\alpha_{k,t}$, respectively. The Convention status is denoted by $CTC_{j,t}$, which equals one once country j introduces the Convention and zero otherwise. Country level control variables are summarized by $X_{j,t}$ and include $\ln(\text{GDP per capita})$, $\text{GDP per capita growth}$, $\ln(\text{population})$, population growth and $\text{population density}$. The interaction term, *HHI_pre_convention*, measures the Herfindahl-Hirschman Index of a country's airline industry prior to the introduction of the Convention. The dependent variable in column (1) is Herfindahl-Hirschman Index (HHI) in the respective country-year. In column (2) the dependent variable is the market share of the largest airline. The sample includes all countries with available information from 1980 to 2015. Robust standard errors clustered at country-level are denoted in parentheses. * indicates statistical significance at the 10% level, ** at the 5% level, and *** at the 1% level.

Table 15: Impact of the Convention on Consumers
Product Variety: Routes, Destinations and Origins

Dep. Var.	(1) ln (# of routes)	(2) ln (# of destinations)	(3) ln (# of origins)	(4) ln (# of routes)	(5) ln (# of destinations)	(6) ln (# of origins)
<i>CTC</i>	0.146*** (0.050)	0.149*** (0.047)	0.051* (0.029)	0.140*** (0.049)	0.143*** (0.047)	0.049* (0.029)
Open Skies with US				0.073** (0.031)	0.068** (0.030)	0.019 (0.022)
Macro Controls	YES	YES	YES	YES	YES	YES
Country FE	YES	YES	YES	YES	YES	YES
Region \times Year FE	YES	YES	YES	YES	YES	YES
No. of Countries	180	180	180	180	180	180
Obs	4,115	4,115	4,115	4,115	4,115	4,115
Adj R2	0.934	0.924	0.905	0.934	0.924	0.905

The table shows how the Convention affects consumer choice set. The unit of observation is country-year. The coefficients are obtained by estimating the following specification:

$$Y_{j,t} = \gamma_j + \alpha_{k,t} + \beta CTC_{j,t} + \theta' X_{j,t} + \varepsilon_{j,t}$$

where j indexes country, t indexes time and k indexes region. Country and region by year fixed effects are captured by γ_j and $\alpha_{k,t}$, respectively. The Convention status is denoted by $CTC_{j,t}$, which equals one once country j introduces the Convention and zero otherwise. Country level control variables are summarized by $X_{j,t}$ and include $\ln(\text{GDP per capita})$, $\ln(\text{population})$, population growth and population density. The dependent variables are log number of distinct routes, destination cities and originating cities. Robust standard errors clustered at country-level are denoted in parentheses. * indicates statistical significance at the 10% level, ** at the 5% level, and *** at the 1% level.

Table 16: Impact of the Convention on Consumers
Product Quality: Safety and Service Rating

Dep. Var.	safety			service rating			
	(1)	(2)	(3)	(4)	(5)	(6)	(7)
	# of accidents	# of airlines with accidents	# of cabin fatalities	# of ground fatalities	average rating	low rating share	SD rating
<i>CTC</i>	-0.055** (0.027)	-0.054** (0.027)	-0.125 (0.089)	-0.035* (0.021)	0.270* (0.160)	-0.096** (0.045)	-0.146** (0.062)
Macro Controls	YES	YES	YES	YES	YES	YES	YES
Country FE	YES	YES	YES	YES	YES	YES	YES
Region × Year FE	YES	YES	YES	YES	YES	YES	YES
No. of Countries	182	182	182	182	121	121	121
Obs	5,162	5,162	5,162	5,162	1,078	1,078	1,078
Adj R2	0.572	0.569	0.336	0.198	0.439	0.334	0.53

The table shows how the Convention affects product quality in the airline industry. The unit of observation is country-year. The coefficients are obtained by estimating the following specification:

$$Y_{j,t} = \gamma_j + \alpha_{k,t} + \beta CTC_{j,t} + \theta' X_{j,t} + \varepsilon_{j,t}$$

where j indexes country, t indexes time and k indexes region. Country and region by year fixed effects are captured by γ_j and $\alpha_{k,t}$, respectively. The Convention status is denoted by $CTC_{j,t}$, which equals one once country j introduces the Convention and zero otherwise. Country level control variables are summarized by $X_{j,t}$ and include $\ln(\text{GDP per capita})$, $\ln(\text{population})$, population growth and population density. Columns (1) to (4) study safety while columns (5) to (7) study customer service rating. The sample covers all accidents from 1980 to 2015 and all customer reviews available on Skytrax. Robust standard errors clustered at country-level are denoted in parentheses. * indicates statistical significance at the 10% level, ** at the 5% level, and *** at the 1% level.

Appendix to “Globally Consistent Creditor Protection, Reallocation and Productivity”

Bo Bian

London Business School

This appendix has four sections. Section [A](#) contains additional information on variable definition and construction. Section [B](#) provides evidence that capacity utilization can capture efficiency and productivity in my setting. Section [C](#) provides additional results. Section [D](#) includes further robustness tests of the main empirical results.

A Appendix: Variable Definition and Construction

Table A1: Description of Variables

Variable	Definition
From FlightGlobal	
Age	Number of years since delivery of the aircraft (or since “birth date”).
Age at Death	Age when the aircraft was scrapped.
Tech Age	Aircraft technological age, or the number of years since the introduction of the aircraft’s type.
Type	Aircraft or asset type, e.g., Airbus 320, Boeing 747.
Average monthly flying hours (raw)	Proxy for productivity or utilization rate. This is first constructed for each aircraft-year and then aggregated at two other levels: - country level: averaged across the entire fleet of a country; alternative measures include aircraft-size weighted productivity. - firm level: averaged across the entire fleet of a firm.
Average monthly flying hours (age-type adjusted)	Adjusted by the age and type of the aircraft. I regress asset utilization rate on aircraft age, with aircraft type fixed effects. I then take the residual and add the mean utilization rate to it. This gives me the age-type adjusted productivity measure.
Fleet Size (# of aircraft)	Number of aircraft operated by a carrier. At country-level, this is defined similarly. Alternative measures include seating capacity weighted fleet size, maximum take-off weight weighted fleet size and wingspan weighted fleet size.
From Airfinance Journal	
# of deals foreign	Number of deals by foreign financiers.
# of deals local	Number of deals by local financiers.
share foreign	Share of deals by foreign financiers.
# of foreign financiers	Number of unique foreign financiers.
# of type	I count the number of structures in the closed financing deals as a proxy for the number of types of financing deals. This webpage (https://airfinancejournal.com/Data/About) provides a detailed description on the possible structures.
# of deals	Total of deals by all financiers.
value of deals	Total value of deals by all financiers (in million dollars).
From Bureau of Transportation Statistics	
# of routes	Number of unique direct routes between a given country and the US.
# of destinations	Number of unique destinations in the US that can be directly reached by flight from a given country.
# of origins	Number of cities in a given country that can fly directly to the US.
From Skytrax	
average rating	Average customer ratings (1 to 5) for the flights operated by a given country’s airlines.
low rating share	Share of ratings equaling to 1 point (out of 5).
SD rating	Standard deviation of customer ratings for the flights operated by a given country’s airlines.
From WTO Air Transport (Air Services Agreements Projector)	
Air Liberalization Index	Measurement of the openness of the air transport policy of a given country. More details can be found on the following webpage: https://www.wto.org/asap/resource/data/html/methodology_e.htm
Number of ASA countries	Number of bilateral Air Services Agreements signed by a given country up to a given year .
From World Bank World Development Index	
Air Dprt	Air transport, number of registered carrier departures.
Air Psgr	Air transport, number of passengers carried.
Rail KM	Rail lines (total route-km).
Rail Psgr	Railways, volume of passengers carried (million passenger-km).

B Appendix: Validation of Key Measures

In Appendix B, I provide evidence that capacity utilization is a reasonable proxy for efficiency and productivity in my setting.

Capacity utilization, or block hours, represents a key measure of aircraft productivity in the airline industry. It is directly linked to another important productivity measure – available seat miles (ASMs) generated per aircraft per day. Higher utilization results in lower fixed costs per unit and lower cost per available seat mile. To further validate this measure, I examine its correlations with other performance measures. Figure B1a and Figure B1b plot each US listed airline’s gross and net profitability against daily capacity utilization. I find that profitability is positively correlated with aircraft utilization. An one hour increase in average daily capacity utilization corresponds to almost 2 percentage points increase in net profitability.

Airlines may face a trade-off between frequency of flights and load factor. One potential concern is that airlines with high daily flying hours may operate empty aircraft and therefore have a lower load factor. Figure B1c shows this is not likely to be true. In fact, there is a slightly positive correlation between load factor and daily capacity utilization. According to Figure B1d, passenger yield, measured by revenue per passenger-mile, also exhibits a weak positive correlation with capacity utilization. At the aggregate level, capacity utilization is also positively correlated with profitability (Figure B3). Aircraft are also parked inactive more in economic downturns than upturns. For example, during the Great Recession, daily capacity utilization drops by around 8%.

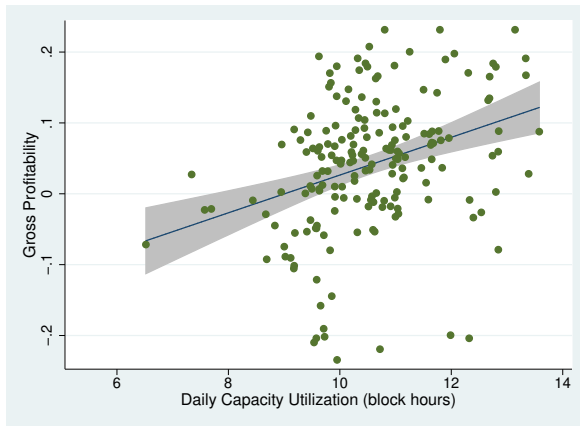
Moreover, I find that an airline’s capacity utilization is substantially lower before entering distress or bankruptcy. In Figure B2, I examine the discount in capacity utilization among failing airlines as compared with healthier airlines. Figure B2a and Figure B2b show that capacity utilization is almost 40-50% lower when firms are close to exiting or experiencing major downsizing.

Importantly, Foster, Haltiwanger, and Syverson (2008) documents that the productivity-survival link is more robust using the physical-quantity-based productivity measure rather than the revenue-based productivity measure. They further show that physical productivity is negatively correlated with prices while revenue-based productivity is positively correlated with prices.⁵⁰ Therefore, the dispersion in revenue-based productivity among firms would be smaller than that in quantity-based productivity, suggesting that the coefficient estimation in the reallocation analysis (Table 6) is likely to be conservative.

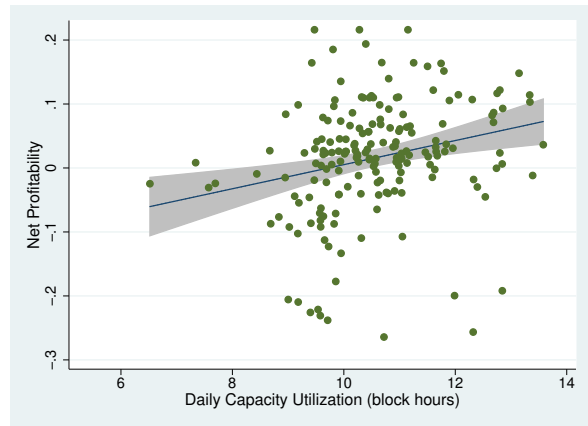
C Appendix: Additional Results

D Appendix: Robustness Tests

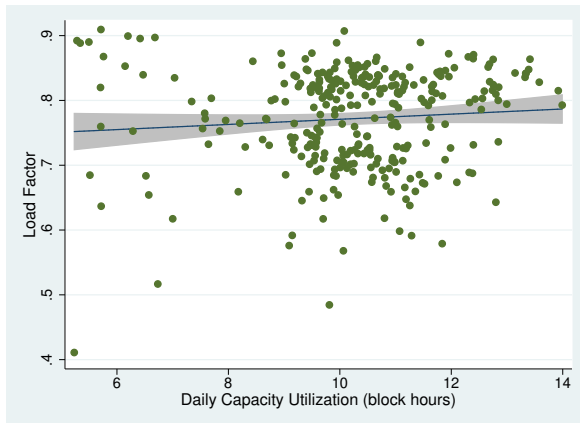
⁵⁰According to Foster, Haltiwanger, and Syverson (2008): “The negative physical productivity-price correlation is consistent with equilibria where producers are price setters and more efficient businesses find it optimal to pass along their cost savings through lower prices.”



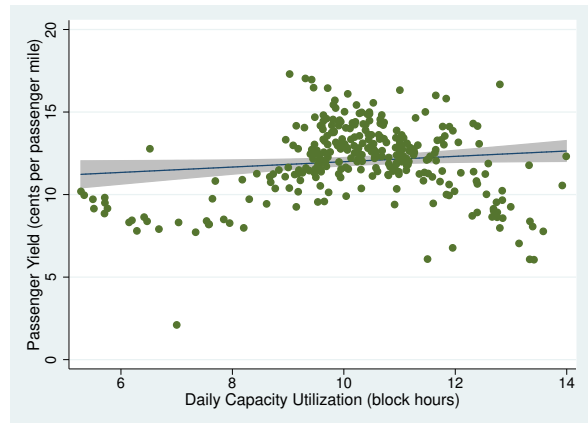
(a) Gross Profitability



(b) Net Profitability



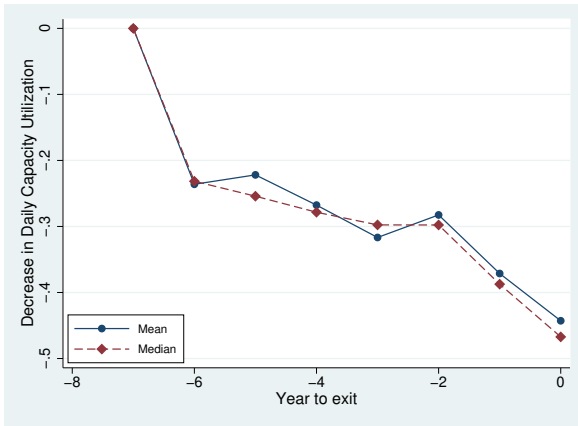
(c) Load Factor



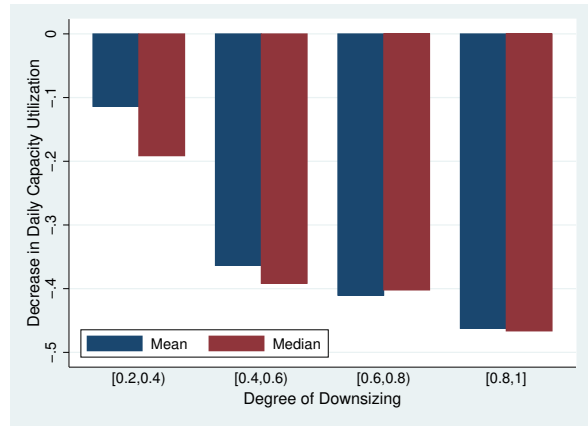
(d) Passenger Yield

Figure B1: Correlation Between Daily Capacity Utilization and Other Performance Measures

Figure B1 plots other performance measures against daily capacity utilization using data of US listed airlines from 1995 to 2017. In Figure B1a, y-axis shows gross profitability. In Figure B1b, y-axis shows net profitability. In Figure B1c, y-axis shows load factor. In Figure B1d, y-axis shows passenger yield, measured as cents earned by each revenue passenger mile. X-axis is daily aircraft capacity utilization (daily block hours average over the entire fleet of each airline) across all figures. Data is from the MIT Global Airline Industry Program.



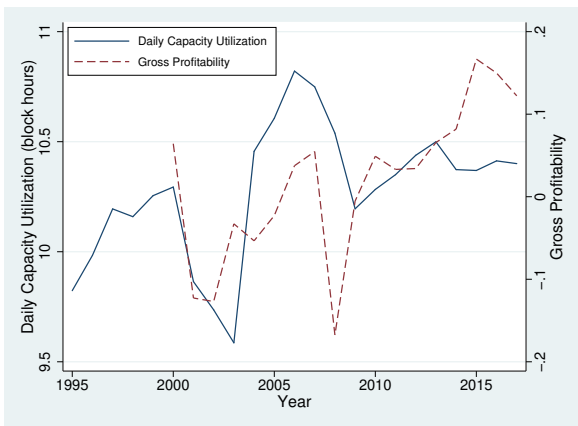
(a) Exiting Firms



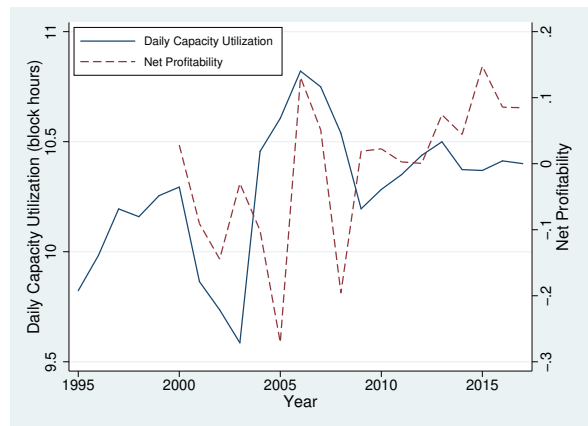
(b) Downsizing Firms

Figure B2: Decrease in Daily Capacity Utilization in Failing Firms

Figure B2 plots the discount in capacity utilization among failing airlines against healthier airlines. Figure B2a compares the capacity utilization in the years close to exit (1 to 6 years before exit) with the capacity utilization in other years (more than 6 years from exit). X-axis shows the year to exit. Figure B2b compares the capacity utilization in firms experiencing different degrees of downsizing (20% to 100% downsizing) with the capacity utilization in firms experiencing less than 20% downsizing or expansion. X-axis shows four bins which indicate different degrees of downsizing.



(a) Operating Profitability and Utilization



(b) Net Profitability and Utilization

Figure B3: Correlation Between Daily Capacity Utilization and Profitability (Aggregate Level)

Figure B3 plots daily capacity utilization and profitability overtime, aggregated over US listed airlines. Figure B3a shows operating profitability and daily capacity utilization. Figure B3b shows net profitability and daily capacity utilization. Data is from the MIT Global Airline Industry Program.

Table C1: Impact of the Convention on Fleet Size and Technology
Aggregate Country-level

Dep. Var.	(1)	(2)	(3)	(4)	(5)	(6)
	ln(# of aircraft)	ln(# new)	ln(# 2nd hand)	ln(# retired)	Age	Tech Age
<i>CTC</i>	0.195*** (0.072)	0.519*** (0.093)	0.190** (0.078)	0.181** (0.083)	-2.215*** (0.588)	-2.591*** (0.621)
ln(GDP per capita)	0.345*** (0.092)	0.375*** (0.127)	0.034 (0.095)	-0.091 (0.092)	-2.903*** (0.926)	-2.861*** (1.038)
GDP per capita growth	-0.005** (0.002)	0.001 (0.002)	0.010*** (0.003)	0.004* (0.002)	0.058*** (0.019)	0.044** (0.017)
ln(Population)	0.981** (0.413)	0.729 (0.448)	0.434 (0.322)	0.01 (0.259)	0.936 (2.265)	1.841 (2.369)
Pop growth	0.008 (0.012)	0.002 (0.011)	-0.019 (0.014)	-0.01 (0.009)	0.217* (0.113)	0.103 (0.113)
Pop density	-0.000 (0.000)	-0.000 (0.000)	-0.000 (0.000)	-0.001*** (0.000)	-0.003 (0.002)	0.000 (0.002)
Country FE	YES	YES	YES	YES	YES	YES
Region \times Year FE	YES	YES	YES	YES	YES	YES
No. of Countries	182	182	182	182	182	182
Obs	5,162	5,162	5,162	5,162	5,162	5,162
Adj R2	0.946	0.761	0.768	0.637	0.699	0.767

The table shows how the Convention affects fleet size and technology at the aggregate industry level. The unit of observation is country-year. The coefficients are obtained by estimating the following specification:

$$Y_{j,t} = \gamma_j + \alpha_{k,t} + \beta CTC_{j,t} + \theta' X_{j,t} + \varepsilon_{j,t}$$

where j indexes country, t indexes time and k indexes region. Country and region by year fixed effects are captured by γ_j and $\alpha_{k,t}$, respectively. The Convention status is denoted by $CTC_{j,t}$, which equals one once country j introduces the Convention and zero otherwise. Country level control variables are summarized by $X_{j,t}$ and include ln(GDP per capita), GDP per capita growth, ln(population), population growth and population density. The dependent variable in columns (1) is $ln(\text{number of aircraft})$ in the respective country-year. In columns (2), (3) and (4) the dependent variables are $ln(\text{number of newly built aircraft})$, $ln(\text{number of newly obtained used aircraft})$ and $ln(\text{number of newly retired aircraft})$, respectively. The dependent variables in columns (5) and (6) are average age and average tech age of the fleet, respectively. Tech age measures aircraft technological age, defined as the number of years since the introduction of the underlying aircraft's type, similar to [Benmelech and Bergman \(2011\)](#). The sample includes all countries with available information from 1980 to 2015 in all columns. Robust standard errors clustered at country-level are denoted in parentheses. * indicates statistical significance at the 10% level, ** at the 5% level, and *** at the 1% level.

Table C2: Cross-sectional Heterogeneity
High vs. Low Government Bank Ownership

Dep. Var.	(1)	(2)	(3)	(4)	(5)	(6)
	ln(average monthly flying hours)		ln(# of aircraft)			
<i>CTC</i> × <i>Productivity</i>			0.287*** (0.078)	0.082*** (0.030)	0.256*** (0.083)	0.054*** (0.016)
<i>CTC</i>	0.185** (0.082)	0.061 (0.061)	-1.335*** (0.373)	-0.319** (0.133)		
<i>Productivity</i>			0.038** (0.019)	0.081*** (0.013)	0.037* (0.019)	0.084*** (0.015)
Sample	High	Low	High	Low	High	Low
Macro Controls	YES	YES	YES	YES	Absorbed	Absorbed
Airline FE	-	-	YES	YES	YES	YES
Country FE	YES	YES	Absorbed	Absorbed	Absorbed	Absorbed
Region × Year FE	YES	YES	YES	YES	Absorbed	Absorbed
Country × Year FE	NO	NO	NO	NO	YES	YES
No. of Countries	87	90	85	89	63	75
Obs	1,878	2,338	7,189	14,871	6,944	14,470
Adj R2	0.674	0.631	0.883	0.896	0.894	0.898

The table shows how the increase in aggregate productivity and the across-firm reallocation differ in countries with high government bank ownership compared to countries with low government bank ownership. Government bank ownership information is from the Bank Regulation and Supervision database. Subgroup “High” (“Low”) represents countries with above (below) median government bank ownership. The unit of observation is country-year in columns (1) and (2). The regression equation in columns (1) and (2) is the same as in Table 4. The unit of observation is firm-year in columns (3) to (6). The coefficients in columns (3) to (6) are obtained by estimating the following specification:

$$Y_{i,t} = \gamma_i + \alpha_{j,t} + \beta CTC_{j,t} \times S_{i,t-1} + \delta S_{i,t-1} + \varepsilon_{i,t}$$

where i indexes firm, j indexes country and t indexes time. Firm and country by year fixed effects are captured by γ_i and $\alpha_{j,t}$, respectively. The Convention status is denoted by $CTC_{j,t}$, which equals one once country j introduces the Convention and zero otherwise. The interaction term $CTC_{j,t} \times S_{i,t-1}$ contains a pre-determined firm-level characteristic, $S_{i,t-1}$, to capture the differential effect of the Convention on the real outcomes. In this table, $S_{i,t-1}$ is the pre-convention firm-level productivity or *ln(average monthly flying hours)*. The dependent variable in columns (1) and (2) is *ln(average monthly flying hours)* in the respective country-year. The dependent variable in columns (3) to (6) is fleet size or *ln(number of aircraft)* in the respective firm-year. In columns (1) and (2), the sample includes all *countries* with available information from 1980 to 2015. The sample includes all *airlines* with available information from 1980 to 2015 in columns (3) to (6). Robust standard errors clustered at country-level are denoted in parentheses. * indicates statistical significance at the 10% level, ** at the 5% level, and *** at the 1% level.

Table C3: Impact of the Convention on the Aviation Traffic and the Rail Industry

Dep. Var.	(1)	(2)	(3)	(4)
	ln(Air Dprt)	ln(Air Psgr)	ln (Rail KM)	ln(Rail Psgr)
CTC	0.177** (0.082)	0.315*** (0.087)	0.003 (0.025)	-0.025 (0.093)
Macro Controls	YES	YES	YES	YES
Country FE	YES	YES	YES	YES
Region \times Year FE	YES	YES	YES	YES
No. of Countries	173	173	106	100
Obs	3,476	3,476	1,692	1,698
Adj R2	0.943	0.957	0.992	0.977

The table shows how the Convention affects the aviation traffic and the rail industry. The unit of observation is country-year. The coefficients are obtained by estimating the following specification:

$$Y_{j,t} = \gamma_j + \alpha_{k,t} + \beta CTC_{j,t} + \theta' \mathbf{X}_{j,t} + \varepsilon_{j,t}$$

where j indexes country, t indexes time, k indexes region. Country and region by year fixed effects are captured by γ_j and $\alpha_{k,t}$, respectively. The Convention status is denoted by $CTC_{j,t}$, which equals one once country j introduces the Convention and zero otherwise. Country-level control variables are summarized by $\mathbf{X}_{j,t}$ and include GDP per capita growth and population growth. The dependent variables in columns (1) and (2) are \ln (*number of carrier departures*) and \ln (*number of air passengers*) in the respective country. In columns (3) and (4), the dependent variables are \ln (*length of railway route*) and \ln (*number of rail passengers*). The sample includes all countries with available information from 1980 to 2015 in the World Bank WDI database. Robust standard errors clustered at country-level are denoted in parentheses. * indicates statistical significance at the 10% level, ** at the 5% level, and *** at the 1% level.

Table D1: Impact of the Convention on Aggregate Productivity
Alternative Specifications and Samples

Dep. Var.	(1)	(2)	(3)	(4)	(5)	(6)	(7)	(8)
	ln(hours)							
<i>CTC</i>	0.117** (0.049)	0.117** (0.047)	0.117** (0.050)	0.123** (0.051)	0.118** (0.050)	0.092** (0.046)	0.147** (0.049)	0.074*** (0.028)
Robust to:	-	EIF	excl. US	excl. BRIC	excl. small	from 1990	22 regions	weighted
Macro Controls	YES	YES	YES	YES	YES	YES	YES	YES
Country FE	YES	YES	YES	YES	YES	YES	YES	YES
Region × Year FE	YES	YES	YES	YES	YES	YES	YES	YES
No. of Countries	177	177	176	173	160	175	174	174
Obs	4,216	4,216	4,181	4,089	4,043	3,497	4,171	4,171
Adj R2	0.656	0.656	0.657	0.652	0.63	0.692	0.651	0.792

The table shows how the Convention affects aggregate industry level productivity using alternative specifications and samples. The unit of observation is country-year. The coefficients are obtained by estimating the following specification:

$$Y_{j,t} = \gamma_j + \alpha_{k,t} + \beta CTC_{j,t} + \theta' X_{j,t} + \varepsilon_{j,t}$$

where j indexes country, t indexes time and k indexes region. Country and region by year fixed effects are captured by γ_j and $\alpha_{k,t}$, respectively. The Convention status is denoted by $CTC_{j,t}$, which equals one once country j introduces the Convention and zero otherwise. To facilitate comparison, column (1) shows the results of the baseline specification. Column (2) uses the Convention's *entry into force date* as the event date. Column (3) excludes the US from the sample. Column (4) excludes Brazil, Russia, India and China. Column (5) excludes the bottom decile of countries in terms of fleet size. Column (6) drops observations before 1990. In column (7), regions defined at a more granular level are used (22 regions according to United Nations groupings). The regression in column (8) is weighted by fleet size in each country-year. Country level control variables are summarized by $X_{j,t}$ and include $\ln(\text{GDP per capita})$, GDP per capita growth, $\ln(\text{population})$, population growth and population density. The dependent variable is $\ln(\text{average monthly flying hours})$ of all aircraft in the respective country. The sample includes all countries with available information from 1980 to 2015. Robust standard errors clustered at country-level are denoted in parentheses. * indicates statistical significance at the 10% level, ** at the 5% level, and *** at the 1% level.

**Table D2: Impact of the Convention on Aggregate Productivity
Controlling for Group-specific Time Varying Trends**

Dep. Var.	(1)	(2)	(3)	(4)	(5)	(6)	(7)	(8)
	ln(average monthly flying hours)							
<i>CTC</i>	0.117** (0.049)	0.130** (0.051)	0.149*** (0.051)	0.118** (0.053)	0.117** (0.050)	0.103** (0.047)	0.117** (0.049)	0.109** (0.050)
Group-specific Trends	-	creditor rights	democ	size	rel size	growth	HHI	cov(size, prod)
Macro Controls	YES	YES	YES	YES	YES	YES	YES	YES
Country FE	YES	YES	YES	YES	YES	YES	YES	YES
Region × Year FE	YES	YES	YES	YES	YES	YES	YES	YES
No. of Countries	177	177	154	175	175	177	177	177
Obs	4,216	4,216	3,722	4,206	4,206	4,216	4,216	4,216
Adj R2	0.656	0.653	0.66	0.654	0.651	0.662	0.66	0.66

The table shows how the Convention affects aggregate industry level productivity, after controlling for different group-specific time varying trends. The unit of observation is country-year. The coefficients are obtained by estimating the following specification:

$$Y_{j,t} = \gamma_j + \alpha_{k,t} + \phi_{g,t} + \beta CTC_{j,t} + \theta' X_{j,t} + \varepsilon_{j,t}$$

where j indexes country, t indexes time and k indexes region. Country and region by year fixed effects are captured by γ_j and $\alpha_{k,t}$, respectively. The Convention status is denoted by $CTC_{j,t}$, which equals one once country j introduces the Convention and zero otherwise. Group-specific time varying trends are summarized by $\phi_{g,t}$. To facilitate comparison, column (1) shows the results of the baseline specification. Columns (2) to (8) control for different group-specific trends: column (2) allows for time-varying trends for countries with different levels of creditor protection (0-4); column (3) allows for time-varying trends for countries with different levels of democracy index (0-10); column (4) (column (5)) allows for time-varying trends for countries with different size (relative size) of the aviation sector (4 groups); column (6) allows for time-varying trends for countries with different growth rates of the aviation sector (4 groups); column (7) allows for time-varying trends for countries with different levels of concentration in the aviation sector (4 groups); column (8) allows for time-varying trends for countries with different levels of distortion, as measured by the covariance between firm size and productivity, in the aviation sector (4 groups). Country level control variables are summarized by $X_{j,t}$ and include ln(GDP per capita), GDP per capita growth, ln(population), population growth and population density. The dependent variable is $\ln(\text{average monthly flying hours})$ of all aircraft in the respective country. The sample includes all countries with available information from 1980 to 2015. Robust standard errors clustered at country-level are denoted in parentheses. * indicates statistical significance at the 10% level, ** at the 5% level, and *** at the 1% level.

Table D3: Impact of the Convention on Average Productivity
Alternative Individual Firm-level Regression Specification (Weighted by Lagged Size)

Dep. Var.	(1)	(2)	(3)	(4)	(5)	(6)	(7)
	ln(average monthly flying hours)						
<i>CTC</i>	-0.027 (0.033)	-0.007 (0.028)	0.016 (0.029)	0.01 (0.030)	0.003 (0.035)	0.016 (0.029)	-0.009 (0.028)
ln(GDP per capita)	0.178*** (0.054)	0.130** (0.059)	0.152** (0.061)	0.181*** (0.060)	0.134** (0.059)	0.149** (0.059)	0.206*** (0.076)
GDP per capita growth	0.003 (0.002)	0.006*** (0.002)	0.002 (0.002)	0.002 (0.002)	0.006*** (0.002)	0.002 (0.002)	0.003 (0.002)
ln(Pop)	0.278 (0.206)	0.231 (0.224)	0.051 (0.236)	0.06 (0.239)	0.221 (0.226)	0.03 (0.236)	0.625*** (0.191)
Pop growth	-0.031** (0.014)	-0.017 (0.014)	-0.013 (0.014)	-0.014 (0.015)	-0.018 (0.014)	-0.014 (0.014)	-0.01 (0.012)
Pop density	0.000 (0.000)	0.000 (0.000)	0.000 (0.000)	0.000 (0.000)	0.000 (0.000)	0.000 (0.000)	0.000 (0.000)
Export to GDP		0.002 (0.002)	0.000 (0.002)	-0.000 (0.002)	0.002 (0.002)	-0.001 (0.002)	0.000 (0.002)
Import to GDP		0.004 (0.002)	0.006** (0.003)	0.006** (0.003)	0.004 (0.002)	0.008*** (0.003)	0.003 (0.003)
Investment to GDP		0.003 (0.003)	0.002 (0.003)	0.002 (0.004)	0.002 (0.003)	0.001 (0.004)	-0.000 (0.002)
Inflation		-0.000 (0.000)	-0.000 (0.000)	-0.000 (0.000)	-0.000 (0.000)	-0.000 (0.000)	0.000 (0.000)
Air Liberalization Index			-0.009*** (0.003)			-0.009*** (0.003)	-0.011** (0.005)
Number of ASA countries				-0.001** (0.001)			
Open Skies with US					-0.027 (0.025)		
Democratic Index						0.002 (0.008)	-0.004 (0.007)
Private Credit to GDP							0.000 (0.000)
Economic Freedom Index							-0.024 (0.024)
Property Rights							0.000 (0.001)
Corruption							0.001 (0.002)
Airline FE	YES	YES	YES	YES	YES	YES	YES
Region × Year FE	YES	YES	YES	YES	YES	YES	YES
No. of Countries	169	157	153	153	156	138	124
Obs	19,967	19,311	17,064	17,064	15,505	16,547	10,949
Adj R2	0.71	0.72	0.741	0.74	0.702	0.74	0.763

The table shows how the Convention affects average productivity at firm level. The unit of observation is firm-year. The coefficients are obtained by estimating the following specification, weighted by lagged firm size:

$$Y_{i,t} = \gamma_i + \alpha_{k,t} + \beta CTC_{j,t} + \theta' X_{j,t} + \varepsilon_{j,t}$$

where i indexes firm, j indexes country, t indexes time and k indexes region. Firm and region by year fixed effects are captured by γ_i and $\alpha_{k,t}$, respectively. The Convention status is denoted by $CTC_{j,t}$, which equals one once country j introduces the Convention and zero otherwise. The dependent variable is $\ln(\text{average monthly flying hours})$. The sample includes all airlines with available information from 1980 to 2015 in all columns. Robust standard errors clustered at country-level are denoted in parentheses. * indicates statistical significance at the 10% level, ** at the 5% level, and *** at the 1% level.

Table D4: Impact of the Convention on Reallocation
Alternative Dependent Variable: Different Size Measures

Dep. Var.	(1)	(2)	(3)	(4)	(5)	(6)
	ln (# of seats)	ln (total mtow)	ln(total wingspan)	ln (# of seats)	ln (total mtow)	ln(total wingspan)
<i>CTC</i> × <i>Productivity</i>	0.121** (0.049)	0.122** (0.051)	0.129*** (0.048)	0.098** (0.043)	0.103** (0.043)	0.099** (0.041)
<i>CTC</i>	-0.519** (0.243)	-0.540** (0.257)	-0.574** (0.232)			
<i>Productivity</i>	0.103*** (0.017)	0.104*** (0.018)	0.085*** (0.015)	0.111*** (0.019)	0.112*** (0.020)	0.090*** (0.017)
Macro Controls	YES	YES	YES	Absorbed	Absorbed	Absorbed
Airline FE	YES	YES	YES	YES	YES	YES
Region × Year FE	YES	YES	YES	Absorbed	Absorbed	Absorbed
Country × Year FE	NO	NO	NO	YES	YES	YES
No. of Countries	174	174	174	138	138	138
Obs	22,060	22,060	22,060	21,414	21,414	21,414
Adj R2	0.911	0.913	0.894	0.916	0.918	0.899

The table shows how reallocation across firms contributes to the gain in aggregate productivity using alternative size measures as the dependent variable. The unit of observation is firm-year. The coefficients in columns (4) to (6) are obtained by estimating the following specification:

$$Y_{i,t} = \gamma_i + \alpha_{j,t} + \beta CTC_{j,t} \times S_{i,t-1} + \delta S_{i,t-1} + \varepsilon_{i,t}$$

where i indexes firm, j indexes country and t indexes time. Firm and country by year fixed effects are captured by γ_i and $\alpha_{j,t}$, respectively. The Convention status is denoted by $CTC_{j,t}$, which equals one once country j introduces the Convention and zero otherwise. The interaction term $CTC_{j,t} \times S_{i,t-1}$ contains a pre-determined firm-level characteristic, $S_{i,t-1}$, to capture the differential effect of the Convention on the real outcomes. In this table, $S_{i,t-1}$ is the pre-convention firm-level productivity or $\ln(\text{average monthly flying hours})$. The regression equation in columns (1) to (3) is similarly defined. The dependent variable in columns (1) and (4) is log total number of seats provided by the fleet in the respective firm-year. In columns (2) and (5), the dependent variable is log total maximum take-off weight of a firm's fleet. In columns (3) and (6), the dependent variable is log total wingspan. Macro control variables include $\ln(\text{GDP per capita})$, GDP per capita growth, $\ln(\text{population})$, population growth and population density. The sample includes all airlines with available information from 1980 to 2015. Robust standard errors clustered at country-level are denoted in parentheses. * indicates statistical significance at the 10% level, ** at the 5% level, and *** at the 1% level.

Table D5: Impact of the Convention on Reallocation
Alternative Productivity Measure: Age-type Adjusted

Dep. Var.	(1)	(2)	(3)	(4)	(5)	(6)
	ln(# of aircraft)	Age	Tech Age	ln(# of aircraft)	Age	Tech Age
<i>CTC</i> × <i>Productivity</i>	0.123*** (0.034)	-1.297*** (0.297)	-1.168** (0.474)	0.088** (0.034)	-1.382*** (0.266)	-1.355*** (0.438)
<i>CTC</i>	-0.552*** (0.165)	5.835*** (1.615)	5.178** (2.522)			
<i>Productivity</i>	0.047** (0.021)	1.450*** (0.175)	1.093*** (0.209)	0.052** (0.026)	1.451*** (0.176)	1.165*** (0.195)
Macro Controls	YES	YES	YES	Absorbed	Absorbed	Absorbed
Airline FE	YES	YES	YES	YES	YES	YES
Region × Year FE	YES	YES	YES	Absorbed	Absorbed	Absorbed
Country × Year FE	NO	NO	NO	YES	YES	YES
No. of Countries	174	174	174	129	129	129
Obs	21,224	21,224	21,224	19,543	19,543	19,543
Adj R2	0.894	0.826	0.817	0.899	0.848	0.842

The table shows how reallocation across firms contributes to the gain in aggregate productivity, using age-type adjusted productivity. The unit of observation is firm-year. The coefficients in columns (4) to (6) are obtained by estimating the following specification:

$$Y_{i,t} = \gamma_i + \alpha_{j,t} + \beta CTC_{j,t} \times S_{i,t-1} + \delta S_{i,t-1} + \varepsilon_{i,t}$$

where i indexes firm, j indexes country and t indexes time. Firm and country by year fixed effects are captured by γ_i and $\alpha_{j,t}$, respectively. The Convention status is denoted by $CTC_{j,t}$, which equals one once country j introduces the Convention and zero otherwise. The interaction term $CTC_{j,t} \times S_{i,t-1}$ contains a pre-determined firm-level characteristic, $S_{i,t-1}$, to capture the differential effect of the Convention on the real outcomes. In this table, $S_{i,t-1}$ is the pre-convention firm-level age-type adjusted productivity or $\ln(\text{average monthly flying hours adjusted by age and type})$. The regression equation in columns (1) to (3) is defined similarly. The dependent variable in columns (1) and (4) is fleet size or $\ln(\text{number of aircraft})$ in the respective firm-year. In columns (2) and (5), the dependent variable is average age of the respective airline's fleet. In columns (3) and (6), the dependent variable is average tech age of the respective airline's fleet. Tech age measures aircraft technological age, defined as the number of years since the introduction of the underlying aircraft's type, similar to [Benmelech and Bergman \(2011\)](#). Macro control variables include $\ln(\text{GDP per capita})$, GDP per capita growth, $\ln(\text{population})$, population growth and population density. The sample includes all airlines with available information from 1980 to 2015. Robust standard errors clustered at country-level are denoted in parentheses. * indicates statistical significance at the 10% level, ** at the 5% level, and *** at the 1% level.

Table D6: Impact of the Convention on Reallocation
Alternative Productivity Measure: Non-continuous (Three Groups)

Dep. Var.	(1)	(2)	(3)	(4)	(5)	(6)
	ln(# of aircraft)	Age	Tech Age	ln(# of aircraft)	Age	Tech Age
<i>CTC</i> × <i>Prod_Tercile</i>	0.175*** (0.043)	-1.726*** (0.465)	-1.148** (0.540)	0.143*** (0.035)	-2.232*** (0.293)	-1.619*** (0.397)
<i>CTC</i>	-0.306*** (0.092)	2.726*** (1.045)	1.523 (1.252)			
<i>Prod_Tercile</i>	0.071*** (0.017)	-1.238*** (0.158)	-1.346*** (0.144)	0.079*** (0.018)	-0.987*** (0.197)	-0.990*** (0.145)
Macro Controls	YES	YES	YES	Absorbed	Absorbed	Absorbed
Airline FE	YES	YES	YES	YES	YES	YES
Region × Year FE	YES	YES	YES	Absorbed	Absorbed	Absorbed
Country × Year FE	NO	NO	NO	YES	YES	YES
No. of Countries	174	174	174	138	138	138
Obs	22,060	22,060	22,060	21,414	21,414	21,414
Adj R2	0.891	0.831	0.823	0.896	0.851	0.843

The table shows how reallocation across firms contributes to the gain in aggregate productivity, using age-type adjusted productivity. The unit of observation is firm-year. The coefficients in columns (4) to (6) are obtained by estimating the following specification:

$$Y_{i,t} = \gamma_i + \alpha_{j,t} + \beta CTC_{j,t} \times S_{i,t-1} + \delta S_{i,t-1} + \varepsilon_{i,t}$$

where i indexes firm, j indexes country and t indexes time. Firm and country by year fixed effects are captured by γ_i and $\alpha_{j,t}$, respectively. The Convention status is denoted by $CTC_{j,t}$, which equals one once country j introduces the Convention and zero otherwise. The interaction term $CTC_{j,t} \times S_{i,t-1}$ contains a pre-determined firm-level characteristic, $S_{i,t-1}$, to capture the differential effect of the Convention on the real outcomes. In this table, $S_{i,t-1}$ is the pre-convention firm-level productivity tercile group. The regression equation in columns (1) to (3) is defined similarly. The dependent variable in columns (1) and (4) is fleet size or $\ln(\text{number of aircraft})$ in the respective firm-year. In columns (2) and (5), the dependent variable is average age of the respective airline's fleet. In columns (3) and (6), the dependent variable is average tech age of the respective airline's fleet. Tech age measures aircraft technological age, defined as the number of years since the introduction of the underlying aircraft's type, similar to [Benmelech and Bergman \(2011\)](#). Macro control variables include $\ln(\text{GDP per capita})$, GDP per capita growth, $\ln(\text{population})$, population growth and population density. The sample includes all airlines with available information from 1980 to 2015. Robust standard errors clustered at country-level are denoted in parentheses. * indicates statistical significance at the 10% level, ** at the 5% level, and *** at the 1% level.